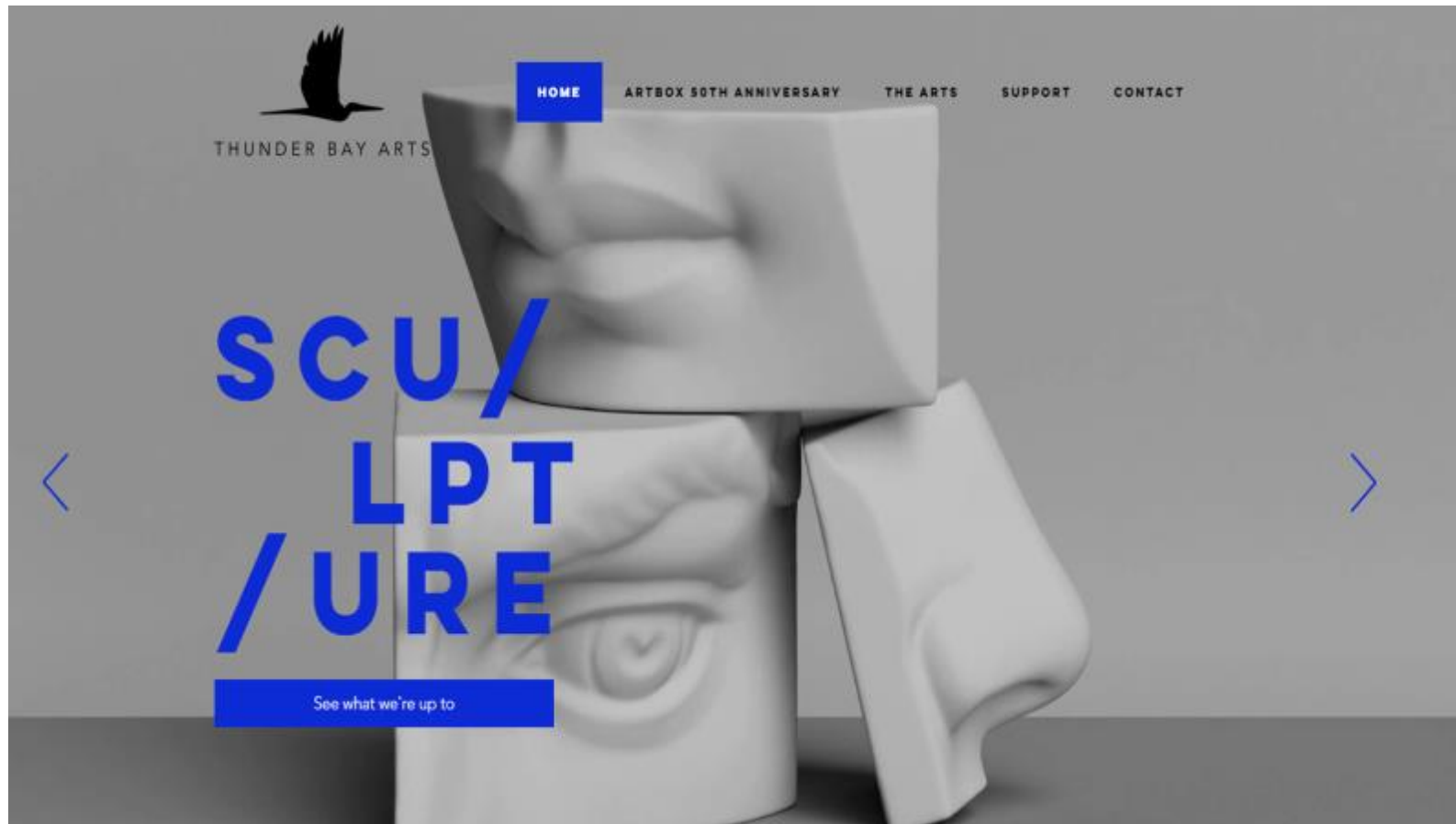


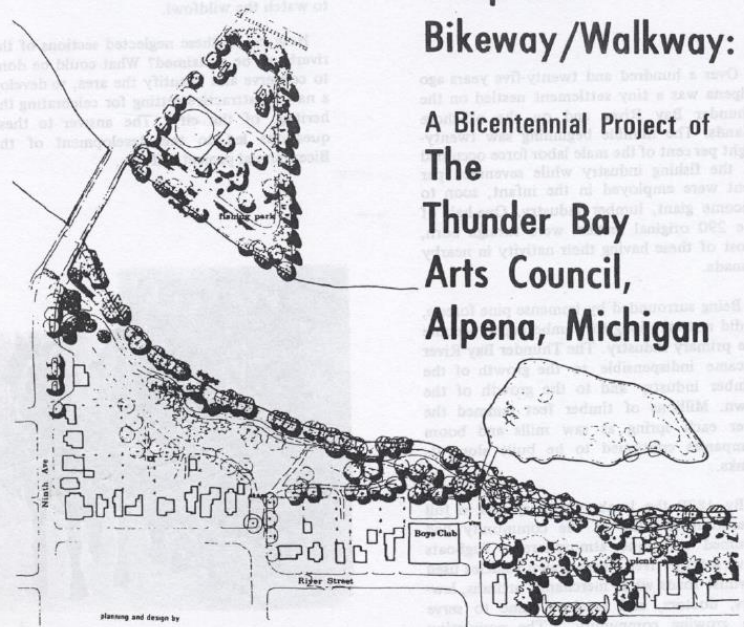
Thunder Bay Arts

Art Vision Alpena project



The Alpena Sculptured Bikeway/Walkway:

A Bicentennial Project of
The Thunder Bay Arts Council,
Alpena, Michigan



Planning and design by
The Polack Walker Wilkins Partnership
Ann Arbor, Michigan

HISTORICAL SIGNS COMMITTEE

Dennis Bodem, Wes Law - Co-Chairpersons

PUBLICITY COMMITTEE

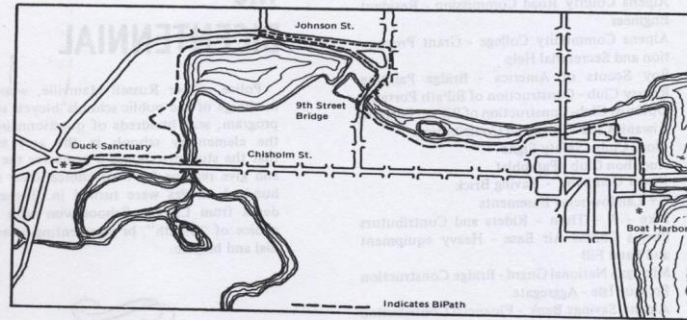
Chuck Wiesen - Chairperson
Sandy Hornyak - Newspaper
Betty Masters - Scrapbook
Marianne Moran - Bicentennial Publicity
Julie Spehar - Radio

SCULPTURE COMMITTEE

Claudia Fletcher - Chairperson
Beverly Bodem
Mary Ann Frey
Lillian Ball
Bob Lyngos
Fred O'Dell
Raymond Pilarski
Herb Stoutenburg

Dick Boyce - Legal Advisor
Jerry Dault - Bicycle Consultant
John Taber - Construction Initiator

THE BIPATH A BEGINNING





PURPOSE

Art Vision Alpena strives to bring new public art and sculpture to Alpena through a continuation of the Sculptured Bi-Path project in conjunction with the Thunder Bay Arts Council. Art Vision Alpena strives to establish an endowment for sustainability and expansion as well as ongoing preservation and maintenance of all sculpture projects.

GIVING STRUCTURE

- Remington.....\$500 gift
- Rodin\$1,000 gift
- Bernini\$2,500 gift
- Donatello\$5,000+ gift

Michelangelo Commission – Financing the total cost of one sculpture allows you to participate in the selection of the artist, form and installation of the sculpture within the framework of the Art Vision Alpena plan.

Da Vinci Endowment – A \$1,000 per year gift for 5 years can be designated toward a sculpture or ongoing preservation and maintenance.

PROPOSED SCULPTURE SITES

- Chisholm & State
- Bay View Park
- Waterfront Park
- News Park
- Mich-e-Ke-Wis Park
- Washington Park
- Dog Park
- Veteran Park
- Rotary Island
- Sytek Park
- MidMichigan Medical Center

“Make visible what, without you, might perhaps never have been seen.”
 –Robert Bresson

VISION IS THE ART OF SEEING WHAT IS INVISIBLE TO OTHERS.

–Jonathan Swift



CONTRIBUTE TO ALPENA'S SCULPTURED BI-PATH



NORTHEAST MICHIGAN COMMUNITY FOUNDATION
 100 N. Ripley, Suite F
 P.O. Box 495
 Alpena, MI 49707
 Ph. 989.354.6881
 www.cnmf.org



CONTINUING THE ORIGINAL VISION

Art Vision Alpena is the continuation of a dream started back in the mid 70's by the Thunder Bay Arts Council as the Alpena Sculptured Bi-Path Project: a celebration of our nation's 200th birthday through art and recreation.

Today, almost 50 years later, we are excited to continue with the original vision and expand upon the initial goal to "recreate with art and nature". Our plan is a bold one, something that will be unique to our community, and one that promises so much in so many ways.

Public art installations throughout town will encourage use of and interaction with our great community. High quality art will generate interest in Alpena and Northeast Michigan as a destination, and it will beautify our town.

Attached you will find a timeline and layout for public art installations in Alpena. It will take a sustained commitment of time, resources, and money to fulfill. We ask for your support of this ambitious and exciting task. Please consider supporting this project through either a one-

time gift or a preferred multi-year commitment. Funding an endowment for sustainability and possible additional sculptures in the future is part of the goal to ensure that existing works are properly preserved and maintained for future generations to enjoy.

Please see the attached timeline for a narrative of the three phases of implementation. We ask for your support of "Art Vision Alpena" and are excited for the beauty and spirit of pride it will bring to Alpena.



Images are intended for conceptual and inspiration purposes only

PHASE 3: 2026 - 2076 – Achieve endowment for sustainability/Long term maintenance

ART VISION ALPENA/THUNDER BAY ARTS COUNCIL, INC. INITIATIVE

Phase 3 – Art Vision Alpena Endowment Fund

As arts and cultural opportunities in Alpena continue to expand and make an even greater impact on our community, each dollar invested now and for the future provides an indelible and lasting expression of our community and the quality of life for the people who live and visit here.

Even a modest contribution from your estate, or designated assets from it, would make a world of difference impacting our community through public sculpture and our ability to sustain and maintain their presence in our community for now and well into the future - forever. Art Vision Alpena's Endowment Fund is a wonderful way to make a durable and lasting difference.

Consider making a donation to promote the arts through the Art Vision Alpena Endowment Fund in the form of a memorial, remembrance, an honor or a legacy in support of a loved one or perhaps yourself.

There are benefits to protecting your family and your legacy of support for the arts in our community with tax and financial protections (benefits) related to income, capital gains, estate and gift taxes. Consider the possibilities when consulting with your financial planner.

You could support the mission of Art Vision Alpena in perpetuity as you plan your estate, so consider a gift in any form and amount:

- Cash gifts
- Stocks
- Bequests and Wills
- Life Insurance
- Retirement Designations (e.g. IRA, 401k and 403)
- Deferred Gift Annuities
- Charitable Remainder Trusts
- Life Estate Interest
- Gifts of Real-estate
- Contribute directly to the Art Vision Alpena Fund

To consider forms of giving such as planned estate gifts and matching gifts to Art Vision Alpena, please contact the Community Foundation for Northeast Michigan at 989.354.6881.

“For it is in giving that we receive.”
 –Francis of Assisi



THUNDER BAY ARTS

[HOME](#)

[ARTBOX 50TH ANNIVERSARY](#)

[THE ARTS](#)

[SUPPORT](#)

[CONTACT](#)

SCU/ LPT /URE

[See what we're up to](#)



Alpena Bi-Path Sculptured Bikeway/Walkway Bicentennial Project

1. Sculptured Fountain (1978)

- 1978 sculpture - \$50,000 – about \$150,000 now

2. Global Collaboration Awareness (2017)

3. Departure of the Great Blue Herons (2017)

4-9. History of Industry Sculpture Series (6 sculptures) (2018)

10. American Dogs (2019)

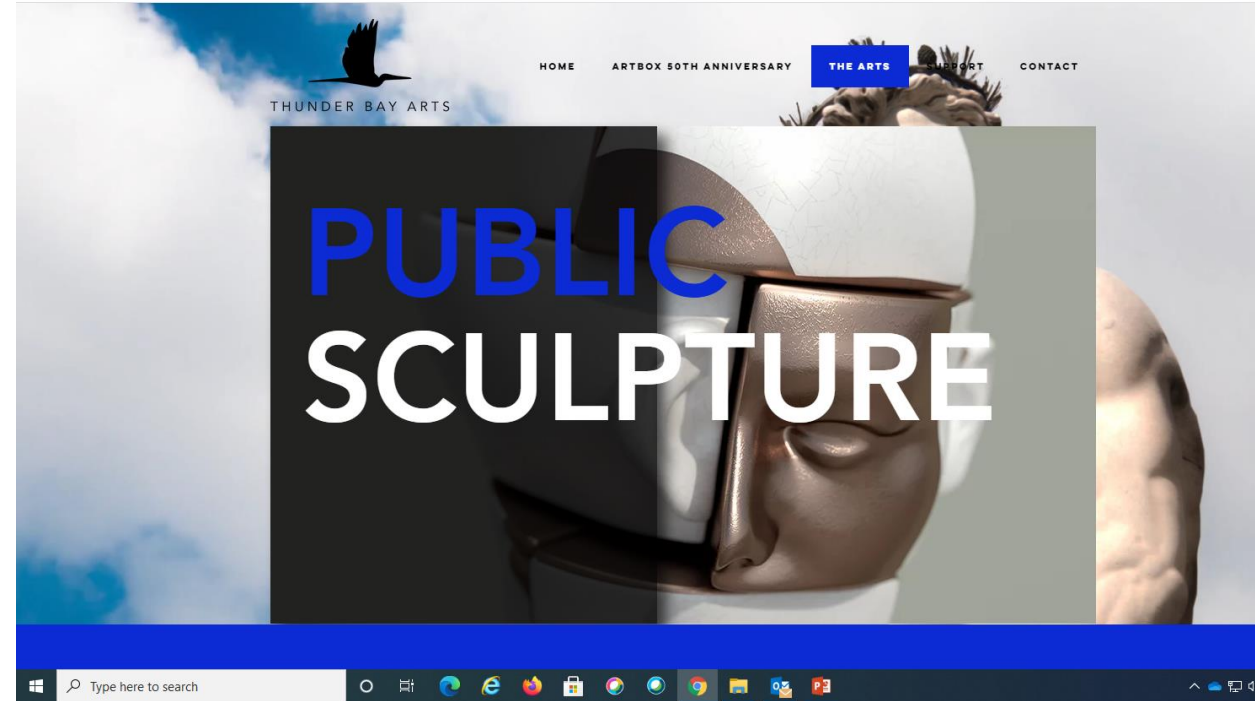
11. Alpena Yacht Club Stone (2019)

12. Alpena Letters Sculpture (2019)

12 new sculptures - \$150,000 of added value; \$52,000 in 2019

13. The River Intertwined (2020)

14. Regatta Sails (2021)



Goal – Reaching the Sestercentennial

Well over \$200,000 of value added to the aesthetics of our community

15. 2022 – Water in Limestone – in progress
16. 2023 – Gone Fishing
17. 2024 – Community Service
18. 2025 – Health and Well Being
19. 2026 – Anniversary Celebration

250th Anniversary of the signing of the Declaration of Independence

50th Anniversary of Alpena Bi-Path

Bi-Path started with the “Bicentennial”



EXPLORE THE BI-PATH

Have little ones to entertain, or just looking for a creative way to get some fresh air?

Download our Sculptured Bi-Path Tour & Scrabble booklet and take the scenic route.

[Download Booklet](#)

[Watch on YouTube](#)





Dali &
Dante
An exhibit of 88 masterpieces
by Salvador Dalí
at the Musée d'Art Moderne et Contemporain
de Montréal, February 12th to March 15th, 2015
www.musee-macm.com

Sculptured Fountain by Glen Michaels (1979)

Cast bronze, rolled metal, concrete, plastic

Sculpture height 6' - width 5' - length 14' – weight 1,500 lbs.; Pool depth 2' - diameter 24'

Glen Michaels taught at Cranbrook Academy of Art, Wayne State University, and the University of Windsor. His work is found at the Bulova Watch Company, Rockefeller Center – New York, Renaissance Center – Detroit, S.S. Kresge Foundation – Troy, Michigan, and Detroit Institute of Arts.

This is the first sculpture of the Alpena Sculptured Bikeway/Walkway Project of 1974/1976 (known as the Alpena Bi-Path) in commemoration of the nation's Bicentennial celebration. Thunder Bay Arts Council, Inc. commissioned this sculpture with financial assistance from the Jesse Besser Fund, Michigan Council for the Arts, local individual and corporate donations. The sculpture's Fan and Horse Tail water jets reflect the heritage of the lakes and rivers surrounding Alpena. The strong vertical thrust echoes the tall trees of the surrounding timberlands.

Thunder Bay Arts Council, Inc. revitalized the sculpture component of the Bi-Path in 2017 upon its 45th anniversary as one of the oldest continuous arts councils in Michigan. Seeking to enrich the aesthetic quality of community while encouraging recreation with art in nature along the Alpena Bi-Path based on the original project, various new sculptures were added beginning with *Departure of the Great Blue Herons* and *Global Collaboration Awareness* (Duck Park and Alpena Community College, 2017), and *History of Industry Sculpture Series* (Alpena Community College and Washington Park, 2018). Renewed energy culminated in the 2018 Art Vision Alpena project for long-range endowment of sculptures with the Community Foundation for Northeast Michigan. A sculpture set, *American Dogs* sculptures was added to the expanding collection at Stafford Dog in 2019 with more sculptures envisioned for the future. Explore the Alpena Bi-Path and discover the beauty of art in nature.



Dali &
Dante

An exhibit at the Metropolitan Museum of Art
February 20th to June 10th, 2011





IDEAS FORGED IN METAL

STUDENTS, TEACHERS AND COMMUNITY WILL BRING NEW ART TO ALPENA

Even though Brittany Worth graduated from

Alpena Community College Thursday, she's excited to visit campus in the fall.

But, it's not for an academic reason. It's so she can see the sculpture she designed with fellow student Stephanie Richards.

They created the design for the sculpture as part of their engineering and design class, and as part of a large community center project with the school.

Political science and history instructor Tim Kuehnlein conceptualized the project about a year ago. "I brainstormed a project that would focus on the idea of a community campus," he said.

He wanted to bridge or generations in town with college students to help enrich their experiences in Alpena, he said.

Part of that was to connect the arts in humanities in a much fuller sense with the community as a whole," he said.

To achieve this he submitted an application for a Teaching Chair Award, and received \$5,000.

Since then he's worked on the project with numerous people.

"It was intended to be collaborative in nature," he said. "First what we did was a review of mission quality paths about the campus and the connection with the social sciences.

There were several people who worked on that including Communications Technician Jess Rappert,

Story by Jordan Spence

who designed the boards. The other half of the money was used to leverage other opportunities for the sculpture project.

First, they applied for a National Endowment For The Arts One Town Grant. The grant is worth \$75,000 with a \$75,000 local match.

It would help fund a series of five sculptures located along the Alpena Inland Canal. The sculptures would represent history, arts, culture, industry and recreation.

This would dovetail with the Thunder Bay Arts Council 45th anniversary when they are trying to resurrect the original Alpena Inland Canal walkway and bikeway.

Kuehnlein said they still have prepared to go forward with the project if they don't receive the grant.

He said the grant application process has helped conceive the idea, and spurred the work to make it a reality.

"The arts commissioned a piece with Ann Gikler, a welder," Kuehnlein said. "The college decided through this endowment project, we began our first sculpture. It has an overall height of 14 feet and the first two of five. The big path was okay for the 20th anniversary of the country in the '70s. It was originally going to be a walking and biking path. They ran out of money and energy and couldn't finish the sculpture, so we're one that is in front of Hesser. This is trying to resurrect the idea of public sculpture."



Stephanie Richards and fellow student Brittany Worth work on the 3D model of the sculpture. Photo Courtesy of Tim Kuehnlein



Worth, Richards, Tim Kuehnlein and ACC Facilities Director Nick Bregge look over the 3D parts. Photo Courtesy of Tim Kuehnlein

The design process. He said discussions began with various faculty members to take the next steps. "ACC instructor Jim Bertles seized the moment and thought it would be a perfect project for his design and engineering class," Kuehnlein said.

This is when Worth and Richards became involved. "We decided to try it and see how it goes," Worth said.

"The design they came up with depicts a sphere sculpture, which represents the globe," Richards said. "We put a rod through the middle for more stability. The design concept we ended up with is seven rings (around the world) with the concept of seven seas, seven continents. We decided with welding construction."

Worth and Richards first designed the sculpture on a computer program, then a 3D model was made.

When completed the sculpture will be more than six feet tall from the concrete base and placed near the front of the campus, visible from Johnson Street. They said ACC Facilities

Director Nick Bregge has been instrumental in helping with the project. Worth and Richards said some of the challenges to the project was trying to meet with everyone involved and the need to learn new computer programs. "Because we spent a short amount of time on this

one program we had to learn as we went along," Richards said. "Overall they both will be excited once it's completed and they see all the work come to fruition. Scott Stevens, owner of Stevens Custom Fabrication, will weld the sculpture."

Kuehnlein said the aim is to have it finished for the fall semester. "We'll continue to plot along with everything," Kuehnlein said. "I think it will have real overtones. This is a continuation of what Alpena has been experiencing as a renaissance. Let's keep it up."

Global Collaboration Awareness

2017

Alpena Community College

This sculpture of seven spheres represents the earth globe comprised of seven seas and seven continents. It was inspired by the armillary sphere (1582) of Antonio Santucci at the library of El Escorial in Spain. Furthermore it represents global awareness and collaboration in educational endeavors, bridging the social sciences, humanities and arts with the technical trades across disciplines and programs of study at Alpena Community College. Faculty, students, and College staff conceptualized, designed, constructed and placed the sculpture on the Alpena Bi-Path. After gathering inspiration from social science and humanities faculty, technical design students and faculty in engineering collaborated with welding, concrete technology, and utility technology programs. The project encouraged discovery and promotion of the value of an ACC education.

Sponsor

Alpena Community College
Endowed Teaching Chair Award 2016-2017 Project

Medium/Material

Sculpture - Welding; Aluminum

Artists/Design

Scott Stevens, Stevens Custom Fabrication
Stephanie Richards, Mechanical Design Technology Student
Brittany Worth, Mechanical Design Technology Student
Jim Bertles, Pre-Engineering/Math Faculty
David Cummins, Mechanical Design Technology/ Marine Technology Faculty
Tim Kuehnlein, Political Science/History Faculty

Dimensions

Sphere height 14.6' • Diameter 7.8' • 250 pounds
Pedestal height 5' • Width 4'

Endowed Teaching Chair Award Project 2016-2017

“Global Collaboration Awareness”

Designed and created by

Scott Stevens, Stevens Custom Fabrication
Stephanie Richards, Mechanical Design Technology Student
Brittany Worth Mechanical, Design Technology Student
Jim Berles, Pre-Engineering/Math Faculty
David Cummins, Mechanical Design Technology/Marine Technology Faculty
Tim Kuehnlein, Political Science/History Faculty

With support from

Alpena Community College Foundation
Alpena Community College (Dr. Donald MacMaster, President)
Thunder Bay Arts Council, Inc.

ACC Campus Beautification Committee

Nicholas Brege (Facilities Director)
Richard Sutherland (Vice President for Administrative Services)
Barb Szczesniak (ACC Foundation)
Jess Ruppert (Public Relations)
Anna Soik (Assistant Controller)
Kim Salziger (Business/Medical Assistant Faculty)
Jeff Blumenthal (Office of Information Technology)
Nancy Seguin (Dean of Students)
Cindy Besaw (Human Resources)
Garth Gapske (Facilities/Custodial)

Penny Boldrey (ACC Foundation)
Kevin Sylvester (Concrete Technology Faculty)
Tim Onstedder (Concrete Technology Faculty)
Robert Tosch (CAD/CAM Faculty)
Tim Ratz (CNC Manufacturing/Welding Faculty)
Roy Smith (Utility Technology Faculty)
Charles Seguin (Maintenance)
Utility Technology Students (Fall 2017)
Zann Brothers Construction, Inc.
Omega Electric & Sign Company, Inc.

Thank you to Lucas and Janet Pfeiffenberger for their generous support of the Endowed Teaching Chair Award that helped make this project possible by inspiring creative educational endeavors.





"Departure of the Great Blue Herons"

by

Iron One Studio - Ann Gildner, Thomas Moran and Mary Zinke

Commissioned by Thunder Bay Arts Council, Inc. in September 2016,
installed October 11, 2017 and dedicated October 13, 2017.

This sculpture commemorates the 45th Anniversary celebration of Thunder Bay Arts Council, Inc.

Thunder Bay Arts Council worked with Ann Gildner of Iron One Studio to resurrect the sculpture component of the Alpena Sculptured Bikeway/Walkway (Alpena Bi-Path) from the original 1974/1976 conceptualization celebrating our nation's Bicentennial. The characterization of Great Blue Herons in departure symbolizes the dawn of a new era for the arts in Alpena and Northeast Michigan. It also plays on the Blue Heron's versatility and agility to habitat, paralleling TBAC's responsiveness to the arts and cultural vibrancy of our community. As one of the oldest continuous arts councils in the State of Michigan, TBAC has been a part of Alpena and Northeast Michigan's elevation of arts and culture as a central part of community and economic development, consistently and steadfastly reaching new heights with each generation.

Sculpture Height 21' - Width 8.9' - Length 19' 800 pounds
Base Height 3' - Width 6' - Depth 4'

The following patrons have donated generously to this project, or have been honored in memory of or in honor of by loved ones who patronize the arts and cultural development in our community.

Blue Herons

2016-17 Thunder Bay Arts Council
Board of Directors

Edward & Pat Buck
Meijer
Elaine C. Smith
Don & Jean Stewart

Foundations

Margaret Lee Garant
Chris & Missi LeFave
Linda Norton

Wings

A-1 Tree Service LLC
Alpena Agency, Inc.
Gail Barr
Roger & Christine Baumgardner
Bruce & Midge Connon
Dean Arbour Ford Lincoln Mercury
Joyce & Paul DeBruhl
Robert Houghmaster
Monte & Diane Jahnke
Wayne & Jill Kowalski
Lakeshore Plumbing, Heating
and Cooling, Inc.
Dr. James & Paula Van Wagnen
Weinkauff Plumbing & Heating, Inc.

Grants

Besser Foundation
Community Foundation for Northeast Michigan
First Federal Community Foundation

This sculpture is one in a series of sculptures along the Alpena Bi-Path which seeks to expand upon the Alpena Sculptured Walkway/Bikeway project. The original sculpture in the collection is "Sculptured Fountain" by Glen Michaels (1979) located at the Jesse Besser Museum for Northeast Michigan. Other sculptures are located throughout town along the Alpena Bi-Path. The collection is being added to by individuals and organizations seeking to enhance the aesthetic quality of our community while bridging arts and culture with opportunities to appreciate art and recreate with it in nature. **Enjoy!**

Feathers

Alpena Alcona Area Credit Union
Austin Brothers Beer Company
David Beatty Dentistry, PC
Bliss Painting
Jim & Penny Boldrey
Thomas & Karen Brindley
Katherine Kelly-Bruss
Bob & Pauline Buchner
Cliff Anschuetz Chevrolet
Lawrence & Jodene Compton
Clarence & Bonnie Cross
Rob Deno
Jerry & Marsette Dubie
Edward Jones - Bryan Strong
Del Eshelman & Phyllis Austin Eshelman
Myra Herron

Cattails

Bill & Bonnie Abend
Dennis & Janet Artley
Karen Beer
Patricia Beer
Tom & Kelly Burnell
Jack & Joanne Cooper
MaryAnn Krajnik Crawford
Clair & Barb Diamond
Elbridge & Marion Dunckel
Jim & Ann Florip
Bill & Agnes Gilmet
HPC Credit Union
Robert & Patricia Hummel

Wild Grasses

Kacey Anderson
Kara Anderson
Ray & Kathy Anderson
Angela Bacchus
George & Lillian Baker
Louie & Jean Baker
Randy Beauchamp
James & Johanna Bowen
Ray & Nina Bray
Richard Bray
Gordon & Kaye Breckenridge
Justin & Mary Christensen-Cooper
Jerry & Joyce Combs
Ann Diamond
Dennis & Genie Diamond
Robert & Wanda Discher
Cheri Donajkowski
Jerry & Carolyn Donakowski
Randy & Peggy Donakowski
Floyd & Lucille Dully
Bret Finzel & Susan Buslepp

In-Kind

Birch Road Band
Bobbing for Piranhas
Eric & Annette Carlson
Carroll Broadcasting/Hits FM
City of Alpena
Jodene Compton
Jeanne Cornelius
D3AD BY MONDAY
Fitzpatrick's Hardware

Phil & Christy Jordan
Deb Kingsley
Edward Klimczak, Jr.
Timothy M. Kuehnlein, Jr.
Lew & Kathryn Kunze
Dodi Lance
Tom & Mary Lappan
Ron & Cheryl Lemke
Donna & Bob Leppek
Tom & Lois Marshall
Brent & Karen McConnell
Adam & Karen Miller
Kim & Michelle Miller
Michael & Geraldine Moors
Reno & Anne Nave
Northeastern Michigan Artists Guild

Pete & Donna Hunkele
Clint Kendzioriski
Dale C. Kendzioriski
Dale M. & June Kendzioriski
Edwin & Stephanie LaFramboise
Bill & Kara LaMarre
Lappan Agency, Inc.
Ruth Ann LeBarre
Michael & Carol Lund
Marilyn Sue Marek
Greg & Mary Ann Neubert
Darcy J. Norris
David & Pamela Norris

Corky Gates
Susan M. Gauden
Drew & Anne Gentry
Joe & Dawn Gentry
Madeleine Gerber
Robert & Janice Haase
Fran Hamp
Gerald & Ann Hardesty
Michael Herrmann
Clifford & Verna Jackson
Robert & Nancy James
Eugene & Rose Kamyszek
Sophia Kamyszek
Clarence & Sandra Kindt
Bob & Shiela Lieber
Rev. & Mrs. William J. McClure, Jr.
Dan Miller
Jay "Cliff" Miller
Lavada Miller-Gamache
Missy Miller
Paul & Jody Mocerri

Sue Floer
Allan James Grund
High Speed
Jesse Besser Museum
JJ's (Jon Benson)
Michigan Brown Trout Festival
Omega Electric & Sign Company, Inc.
Jeff Powers

Shaun Michael Osborne, CFP, CRPC, CFS
James Park
Ashley, Cameron & Cailyn Peters
WF Riley Family
Ernesto & Patricia Segura
The Marc Simons Family
Stanson Floor Covering
Tarkington Family Dentistry
The Alpena News Staff
Thunder Bay Garden Club
Toni, Sam & Neal Titus
Arthur & Donna Towlerlton
Don Trewartha
Daniel & Carol Winslow
Christine Witulski
Wolverine State Credit Union

Scott Adrian Norris
Bernie & Ruth O'Brien & Family
Omega Electric & Sign Company, Inc.
Tom Orth
Todd Russell
Don & Jane Speer
William & Diane Speer
Robert & Susan Stacey
Barbara Stelzer
Daniel & Lucy Taratuta
Vanessa Werle
Chuck & Julie Wiesen
Katie Wolf

John Porter
Dennis & Ruth Rabeau
George & Carole Ralston
James Rapin
Clarence & Sharon Rickard
Ruth Rosenthaler
Joseph Rybarczyk
Jane Speer
Florence Stibitz
Linda Suneson
Elaine Thompson
Ellen Trapp
Wayne & Pam Van Dyke
Bruce & Harriet Weber
Marvin & Judy Weber
Ann C. Weinhagen
Adam Werle
Chris Werle
Lu Williams
Ed & Judy Wisnewski
Richard "Don" & Betty Lou Wysocki

Doug Pugh
The Alpena News
Thunder Bay Theatre
True North Radio
WATZ
WBKB
Bronwyn Woolman
Zann Brothers Construction, Inc.



You are cordially invited

Unveiling of the History of Industry Sculptures

Friday, September 21, 2018

Opening Ceremony ~ 5:30-5:45 p.m.
Washington Ave Park at S. 11th Ave.

Ride your bicycle or take a brisk walk along the
Alpena Bi-Path between locations from 5:45 and 6:15 p.m.
Parking available at both locations for those driving between sites.

Concluding Ceremony ~ 6:15-7:00 p.m.
Van Lare Hall (east lawn near pavilion)
Alpena Community College

Light Refreshments Served

THANK YOU TO ALL OUR SPONSORS:

Besser Foundation
Alpena County Youth and
Recreation Committee
City of Alpena

Community Foundation
for Northeast Michigan
Michigan Council for Arts
and Cultural Affairs

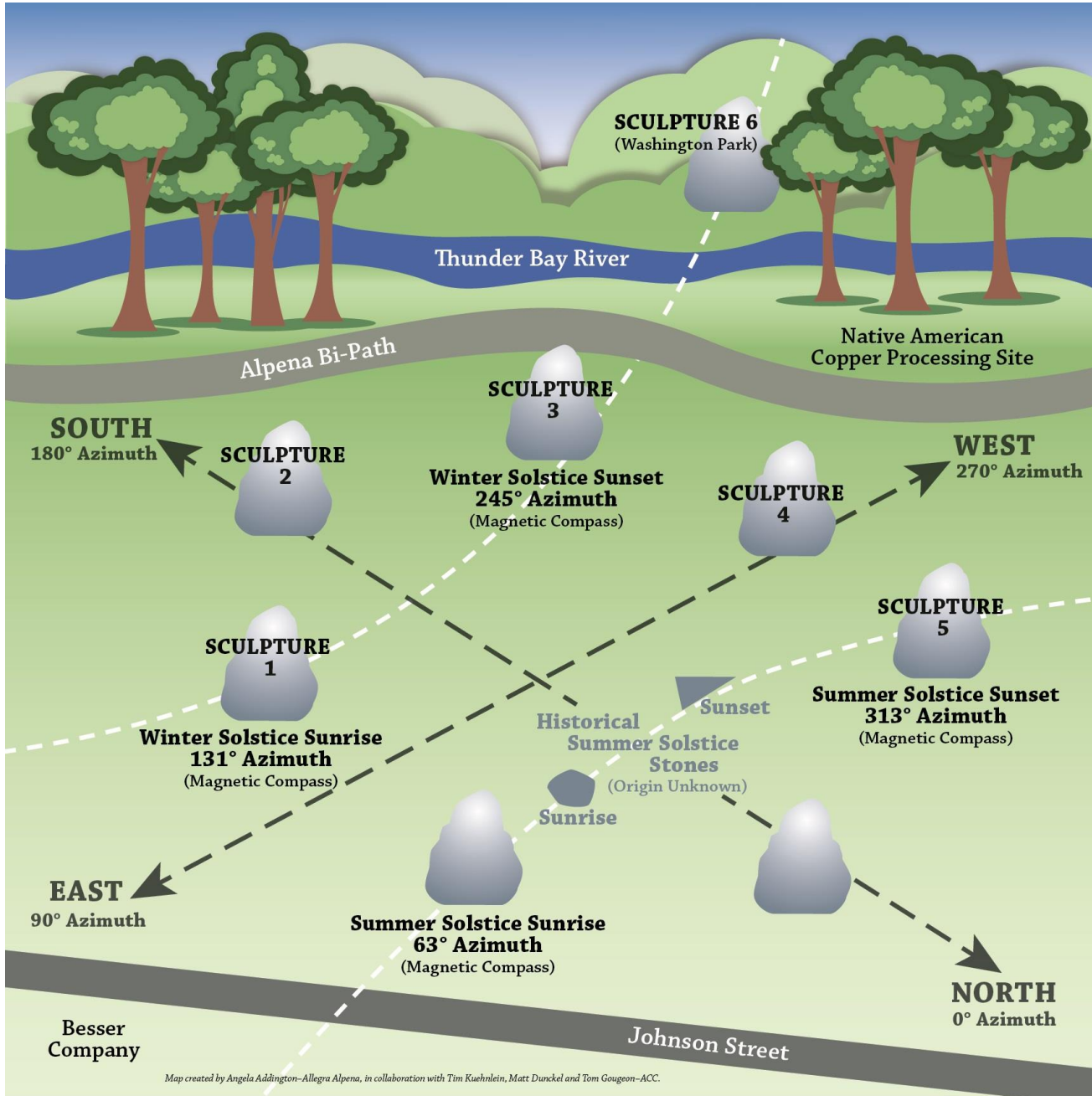
Carmeuse Lime and Stone
Calcite Operations
Besser Company
Bedrock Contracting
and Excavating

Oak City Contracting, LLC
Specification Stone Products
Goodrich Trucking and
Asphalt Paving

Lafarge-Holcim, Alpena
Lafarge-Holcim, Presque Isle
Team Elmer's, Alpena Quarry



ALPENA
COMMUNITY COLLEGE



Calling Artists to Submit Sculpture Proposals

History of Industry

As Told by the Alpena Bi-Path Sculptures

Submissions due February 28, 2018
For details, call 989-356-6678
or visit www.thunderbayarts.org

ALPENA
COMMUNITY COLLEGE

thunder bay
arts council, inc.



“History of Industry Sculpture Series” (2018)

Commissioned by Thunder Bay Arts Council, Inc. and Alpena Community College in September 2017, installed June - September 2018, and dedicated September 21, 2018.

This sculpture series is made possible with financial and material resources from the following:

Besser Foundation
Alpena County Youth and Recreation Committee
City of Alpena
Community Foundation for Northeast Michigan
Michigan Council for Arts and Cultural Affairs
Besser Company
Carmeuse Lime and Stone Calcite Operation
Thunder Bay Arts Council, Inc.

Oak City Contracting, LLC
Lafarge-Holcim, Alpena
Lafarge Presque Isle Quarry
Specification Stone Products - Levy
Goodrich Trucking and Asphalt Paving
Team Elmer's - Alpena Quarry
Bedrock Contracting and Excavating
Alpena Community College

This sculpture series represents the history of industry in Alpena and the surrounding region of Northeast Michigan. It is dedicated to the people who made livelihoods for themselves, their families and their communities throughout time.

The limestone pillars of this sculpture series represent the natural elements of our environment rising from earth as the foundations of economic and community development. Like Stonehenge and other circle monuments from ancient times, this monument to industry, located on a Bronze Age site along the Thunder Bay River, is oriented to the skies and the wonders of the world. Each stone/sculpture is positioned to align with the summer and winter solstice constellations, reflecting Stonehenge and other circle monuments around the world in all their ingenuity and mystery from one generation of humanity to the next and from the earth to the skies.

Civilizations have been built upon resources and raw materials throughout the millennia, and with beliefs that foster creativity and innovation as individuals and communities. Discovering what it takes to make economies and communities prosper in healthy and sustainable ways is something for each generation to realize for itself.

These reflections of natural resources ornamented with artwork of interconnected themes, locations, and forms represent the circles and cycles of life. They encourage the observer to connect with each installation and their interrelationships with one another, reaching beyond these images for an even greater understanding and appreciation of what they represent, including the universe around us.

The objective of this installation is to connect the arts with industry within the context of nature and history for a fuller understanding of where we come from and who we are relative to one another.

The stones serve as the canvas for artwork symbolizing the historical phases of industry in Alpena and Northeast Michigan throughout the ages which have sustained the communities of Northeast Michigan for generations. They depict economic activity from ancient Native American copper processing, to fisheries, farming and hunting, lumbering, concrete technologies, education, healthcare, and tourism and recreation.

While the core of the sculpture series is located on the Alpena Community College campus, the sixth sculpture, Recreation and Tourism, is at Washington Avenue Park, encouraging circularity of movement throughout the City's Bi-Path. Stroll or bike between sites while contemplating nature, industry, the humanities, the arts, and the sciences that have made our communities thrive throughout time.

The ACC site is significant because it is where Native American copper processing occurred during the Bronze Age as indicated by the nearby historical marker. It is also the site where the original Besser Block Machine was innovated by Jesse Besser at the Besser-Churchill Company, a sawmill producing wooden shingles and barrel staves, which stood once where Van Lare Hall currently stands; the story is a testament to the transitional nature of local economies, industry and ingenuity over time. This location also happens to be the initial leg of the original Alpena Bi-path from the college towards downtown and the Alpena harbor.

The Alpena Bi-Path project was originally called the Alpena Sculptured Walkway/Bikeway and later renamed Alpena Bi-Path by local schoolchildren in honor of the Bicentennial celebration for which the path was constructed in 1974-76. The first and only sculpture, “Sculptured Fountain” by Glen Michaels, was installed in 1979 at the Jesse Besser Museum for Northeast Michigan. In commemoration of its 45th Anniversary in 2017, Thunder Bay Arts Council, Inc. commissioned “Departure of the Great Blue Herons” by Ann Gildner at Duck Park. In collaboration with Alpena Community College that same year, “Global Collaboration Awareness” was added to the collection to rejuvenate further the sculpture component of the Bi-Path.

This six-sculpture series is one in an ever-expanding collection of sculptures and art installations along the Alpena Bi-Path seeking to expand upon the Alpena Sculptured Walkway/Bikeway project (Alpena Bi-Path). Look for “Art Vision Alpena” as a special project of Thunder Bay Arts Council, Inc. towards this end for more details. This collection of public sculptures and art installations enhances the aesthetic quality of our community encouraging recreation with art in nature. Enjoy!







Artists announced for latest Bi-Path sculptures

By DIANE SPEER
News Lifestyles Editor

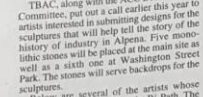
The scenic Alpena Bi-Path, well utilized for recreational purposes like biking and walking, may finally live up to one of its other original intents – that of a public use pathway visually enhanced with art sculptures.

Thunder Bay Arts Council, a driving force behind the bicentennial project back in 1976, has announced several of the artists who will be creating six new sculptures for installation later this year along the Bi-Path. When completed, five of these new works will be situated along the Thunder Bay River near Alpena Community College's Van Lare Hall. A sixth sculpture will be placed at Washington Street Park, also by the river.

"The over-arching objective is to beautify our community," said TBAC member Tim Kuehlein. "This is the type of thing that can drive a lot of tourism to the area and foster economic activity."

TBAC, along with the ACC Beautification Committee, put out a call earlier this year to artists interested in submitting designs for the sculptures that will help tell the story of the history of industry in Alpena. Five months ago, the committee selected the artists who will be placed at the main site as well as a sixth one at the Washington Street Park. The stones will serve as a backdrop for the sculptures.

Below are several of the artists whose work will be featured along the Bi-Path. The accompanying photos are conceptual only.



■ **Ann Gildner, representing fisheries, farming and hunting**
Departure of the Great Blue Heron sculpture installed last fall near the Duck Park. This time around, she plans to incorporate three different kinds of fish and use three different types of metal for her latest large-scale piece. Gildner works out of her studio in Onaway, owned and operated by Tom Moran.

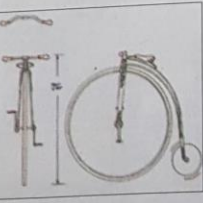


■ **Mike Lempien, representing Native American copper processing**
An architectural designer and creative professional design experience, Lempien is based in Marquette, where a wide variety of his work can be found. His Alpena Bi-Path piece, still in development, will be a relief sculpture made of either 12-inch thick iron or bronze and depicting early Native Americans. Lempien will work with Rick Kempka to complete the piece.



■ **Besser Company, representing concrete technologies**
This piece is still in the development stage, but when completed will represent historical mechanical parts and blocks that helped to make Besser Company an industry leader.

■ **Sharon Smith, representing lumber and paper**
A self-employed artist/designer who specializes in glass mosaics in the great Grand Rapids area, Smith attended Kendall College of Art & Design. She has been creating her concept for the Bi-Path sculpture in residence at Bier Art Gallery & Pottery in Charlevoix. Her concept for the Bi-Path sculpture is a series of three tiles approximately 3x3-feet in size that highlight the importance of the Thunder Bay River and white pine.



■ **Jake Idema, representing recreation and tourism**
Idema, an Alpena resident, works at Bolenz Jewelry doing repair work and creat-

Northeast Exposure Music Series



Courtesy Photo
Blackthorn Celtic Band returns to Rogers City and takes the audience on a musical journey across Ireland on April 14 at 7:30 p.m. in the Rogers City Theater. The band's musical talents include traditional songs of emigration, ballads, shanties, jigs and reels combined with uniquely contemporary Irish. The concert is sponsored by the Presque Isle District Library as the first program in a Northeast Exposure Music Series. General admission tickets are \$5 per person.

Distinguished Young Women of Michigan Scholarship Program

The Distinguished Young Women of Michigan Scholarship Program is now accepting applications for the upcoming scholarship program. The scholarship program promotes scholarships, leadership and talent and is open to high school junior and senior young women graduates in 2019, with a 3.0 GPA and is a Michigan resident.

Distinguished Young Women is a national scholarship program that inspires high school women to develop their full, individual potential through a fun, transformative experience that culminates in a celebratory showcase of their accomplishments.

Young Women strives to give every young woman the opportunity to further her education and prepare for a successful future.

This program awards college scholarships to young women who have distinguished themselves at school and in their communities and will be held July 21 in Canton. Contestants will be judged based on academic achievement, talent, self-expression, physical fitness and interview. Last year over 71,000 in cash scholarships were awarded at the state college grant scholarship program along with numerous college grants.

An Informational Workshop for the Distinguished Young Women of Amer-

ican will be held at the Alpena Community College on April 15 at 1:00 p.m. at the Pointe-Croix Center in Garden City at 32897 Main Drive. Interested high school and college students are invited to attend and find out more about this scholarship program. Contact committee member Melissa Mahood at 443-0481 or Jan 517-260-0720. For more information, visit distinguishedyw.org.

Next Apena Bi-Path sculptures in development

Call goes out to area artists for proposals

By DIANE SPEER
News Lifestyles Editor

The commitment to create art sculptures along the scenic Alpena Bi-Path continues into 2015.

After the successful dedication of two new pieces last October – the Department of the Great Blue Heron sculpture and the Global Collaboration Awareness sculpture – plans have been announced for additional installations. This time, the commissioned art thematically will represent foundational and current industries vital to the development and sustainability of Alpena.

"The next sculpture actually is going to be six components and play on the theme of the history of industry in Alpena and Northeast Michigan," said Tim Kuehlein of the Thunder Bay Arts Council. The TBAC served as one of the main driving forces behind the original development of the Bi-Path and now the effort to bring more art into public spaces.

Kuehlein said the committee working on the new project is using the world-renowned Stonehenge as an inspiration to both convey the ingenuity of Early Man and as a structural canvas for art. Plans call for installing six large scale monolithic limestone columns at two different sites along the Bi-Path and then commissioning artists to create art that reflects the History of Industry theme. Their artwork will then become a part of the columns.

"In order for the new sculptures to have large scale volume, we decided to play off Alpena's salt of the earth – limestone – and use large monolithic pillars of limestone as the canvas for smaller scale artwork," Kuehlein said. "The stones will

be between 8 to 10 feet high. They will be staggered in heights and 4 to 5 feet wide and about 2 feet deep so it's going to be pretty substantial artwork."

Five of the six columns will be placed along the Bi-Path near Alpena Community College's Van Lare Hall. According to Kuehlein, that site is significant to early industry because it originally housed the first Besser machine. Not only that, the location also was a significant Native American copper processing site.

The sixth column will be located at Washington Avenue Park along the Thunder Bay River.

"The idea of separation is to have the sculptures inter-connected thematically but to have people go the other side of the Bi-Path physically engage in the space Kuehlein said.

The sculpture committee spearheading the project already has contacted a number of artists about submitting proposals for a commission. Other interested artists may contact TBAC at 356-6678 for information and a project prospectus. Kuehlein said everyone is grateful that the limestone columns are being donated by Carmeuse Lime Stone and Lafarge Presque Isle Oak City, the contractor for the coming renovation of Van Lare Hall, also has agreed to transport and set the columns in place.

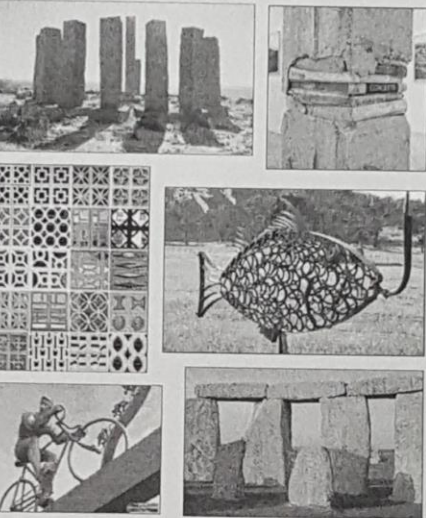
"We know the locations for the sculptures, we have the funds. It's now a matter of waiting for spring to get the stones in place," Kuehlein said. "In the meantime, we're recruiting artists to give us concepts. We want everything to fit together thematically."

Besides TBAC, others supporting the project are ACC, Besser Foundation, Northeast Michigan, Alpena County Parks and Recreation Commission, Grand Lumber also is being sought from Michigan Council for the Arts and Cultural Affairs and the Community Foundation for Northeast Michigan.

Overall cost of the project is estimated at \$60,000. Unlike the sculptures installed last year, a public fundraising campaign is expected.

"After the submission of the proposals, we will use the month of March to solidify commissions with the artists. They will then have a month to complete their artwork. We're going to have the sculptures installed and dedicated sometime in the fall."

Members of the sculpture committee include Midge Combs, Jean Stewart, Marcete Duber, Rog Baumgardner, Judene Compton and Michelle Miller. ACC's campus beautification committee, spearheaded by N. Brege, also is playing a key role in the overall project.



be between 8 to 10 feet high. They will be staggered in heights and 4 to 5 feet wide and about 2 feet deep so it's going to be pretty substantial artwork."

Five of the six columns will be placed along the Bi-Path near Alpena Community College's Van Lare Hall. According to Kuehlein, that site is significant to early industry because it originally housed the first Besser machine. Not only that, the location also was a significant Native American copper processing site.

The sixth column will be located at Washington Avenue Park along the Thunder Bay River.

How to submit an artist proposal

Artists should keep in mind their work must be appropriate for the History of Industry theme and represent one of the following categories:

- Native American copper processing
- Fisheries, farming and hunting
- Lumbering and paper
- Concrete technologies
- Education and healthcare
- Tourism and recreation

Proposals may be made for more than one of the six listed categories, but individual artwork for each category is required. Themes may not be merged into one piece of artwork.

Artwork should be proportionate to roughly half or less of the dimensions of the limestone columns. Columns will be approximately 8-10 feet high, 4-5 feet wide and 2-feet deep. Ability to affix directly or place artwork next to one of the columns is required.

Submission of conceptual design or small scale renderings are due to TBAC, located at 127 W. Chisholm, by Feb. 1. Final work must be ready for final installation by August.

Consentation is possible and will be negotiated upon evaluation and selection of proposals on a case-by-case basis.

For more information or to receive a copy of the project prospectus, call TBAC at 356-6678.

Next Apena Bi-Path sculptures in development

Call goes out to area artists for proposals

By DIANE SPEER
News Lifestyles Editor

The commitment to create art sculptures along the scenic Alpena Bi-Path continues into 2015.

After the successful dedication of two new pieces last October – the Department of the Great Blue Heron sculpture and the Global Collaboration Awareness sculpture – plans have been announced for additional installations. This time, the commissioned art thematically will represent foundational and current industries vital to the development and sustainability of Alpena.

"The next sculpture actually is going to be six components and play on the theme of the history of industry in Alpena and Northeast Michigan," said Tim Kuehlein of the Thunder Bay Arts Council. The TBAC served as one of the main driving forces behind the original development of the Bi-Path and now the effort to bring more art into public spaces.

Kuehlein said the committee working on the new project is using the world-renowned Stonehenge as an inspiration to both convey the ingenuity of Early Man and as a structural canvas for art. Plans call for installing six large scale monolithic limestone columns at two different sites along the Bi-Path and then commissioning artists to create art that reflects the History of Industry theme. Their artwork will then become a part of the columns.

"In order for the new sculptures to have large scale volume, we decided to play off Alpena's salt of the earth – limestone – and use large monolithic pillars of limestone as the canvas for smaller scale artwork," Kuehlein said. "The stones will

be between 8 to 10 feet high. They will be staggered in heights and 4 to 5 feet wide and about 2 feet deep so it's going to be pretty substantial artwork."

Five of the six columns will be placed along the Bi-Path near Alpena Community College's Van Lare Hall. According to Kuehlein, that site is significant to early industry because it originally housed the first Besser machine. Not only that, the location also was a significant Native American copper processing site.

The sixth column will be located at Washington Avenue Park along the Thunder Bay River.

"The idea of separation is to have the sculptures inter-connected thematically but to have people go the other side of the Bi-Path physically engage in the space Kuehlein said.

The sculpture committee spearheading the project already has contacted a number of artists about submitting proposals for a commission. Other interested artists may contact TBAC at 356-6678 for information and a project prospectus. Kuehlein said everyone is grateful that the limestone columns are being donated by Carmeuse Lime Stone and Lafarge Presque Isle Oak City, the contractor for the coming renovation of Van Lare Hall, also has agreed to transport and set the columns in place.

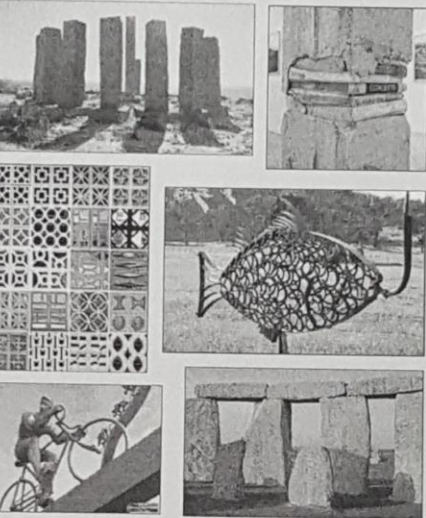
"We know the locations for the sculptures, we have the funds. It's now a matter of waiting for spring to get the stones in place," Kuehlein said. "In the meantime, we're recruiting artists to give us concepts. We want everything to fit together thematically."

Besides TBAC, others supporting the project are ACC, Besser Foundation, Northeast Michigan, Alpena County Parks and Recreation Commission, Grand Lumber also is being sought from Michigan Council for the Arts and Cultural Affairs and the Community Foundation for Northeast Michigan.

Overall cost of the project is estimated at \$60,000. Unlike the sculptures installed last year, a public fundraising campaign is expected.

"After the submission of the proposals, we will use the month of March to solidify commissions with the artists. They will then have a month to complete their artwork. We're going to have the sculptures installed and dedicated sometime in the fall."

Members of the sculpture committee include Midge Combs, Jean Stewart, Marcete Duber, Rog Baumgardner, Judene Compton and Michelle Miller. ACC's campus beautification committee, spearheaded by N. Brege, also is playing a key role in the overall project.



be between 8 to 10 feet high. They will be staggered in heights and 4 to 5 feet wide and about 2 feet deep so it's going to be pretty substantial artwork."

Five of the six columns will be placed along the Bi-Path near Alpena Community College's Van Lare Hall. According to Kuehlein, that site is significant to early industry because it originally housed the first Besser machine. Not only that, the location also was a significant Native American copper processing site.

The sixth column will be located at Washington Avenue Park along the Thunder Bay River.

ACC to have 5 new sculptures

By JORDAN SPENCE
News Staff Writer

ALPENA — Five new sculptures will be created and placed on the Alpena Community College campus next year.

There will be six sculptures total, with five located on campus, ACC instructor Tim Kuehlein said. He presented the project to the board of trustees during its meeting Wednesday. The board made a unanimous vote to approve a grant application.

"We're going to work on a second set of sculptures. The reason I come to you tonight is that we need a board resolution this evening to authorize submission of a grant request with the Michigan Council of Arts and Cultural Affairs. It's only a \$4,000 but it's an important \$4,000. We're going to use that to match that with \$12,000 given by the Besser Foundation and \$7,500 given by the Alpena County Parks and Recreation Commission to make this for set of sculptures, six in total, after set of next year," he said.

The project is a continuation of the two sculptures created for the Alpena Bi-Path in October.

"We've got a good foundation to work on with the two sculptures added to the bi-path this year," he said.

The theme of the sculptures is history of industry here.

"What we're going to try and do is capture the history of industry in Alpena. It's a very conceptual framework," he said. "What we're working toward is playing on the theme of Stonehenge. The idea of ancient history, the mystery behind it, what it takes for a community to assemble and survive. Furthermore, the ingenuity it required to make Stonehenge a reality. It's something we can play off of especially using stone. It's made our economy in Michigan survive among other things."

He said the large scape stones can make a high impact with height and volume without a huge cost.

There will be five stones by the wishing well near Van Lare Hall. Right next to it is a Native American copper processing site a historic monument. He said they want to integrate the whole site into a sort of rendition of the stones with individual artwork applied to the stone canvas.

"Well done, this is great," Vice Chair Thomas Townsend said.

Jordan Spence can be reached via email at jspence@thealpennews.com or by phone at 358-3687.



ACC's Herman sculpture at Lions Club
Breaks Herman, recently installed sculpture at the Lions Club. The sculpture is a large, monolithic limestone column, approximately 8 feet high, 4 feet wide, and 2 feet deep. It is a tribute to the history of industry in Alpena, specifically the copper processing industry. The sculpture is made of limestone and is a tribute to the history of industry in Alpena.

ACC offers SHARP

The Alpena Community College (ACC) is pleased to announce the installation of the Herman sculpture at the Lions Club. The sculpture is a large, monolithic limestone column, approximately 8 feet high, 4 feet wide, and 2 feet deep. It is a tribute to the history of industry in Alpena, specifically the copper processing industry. The sculpture is made of limestone and is a tribute to the history of industry in Alpena.

Prepping for sculptures

Craig Fregott of Oak City Contracting, with Matt Spring and Travis Kosarewski of Lafarge Heron, Alpena, are prepping the site for the installation of the Herman sculpture at the Lions Club. The site is located near the Van Lare Hall and the wishing well. The site is being prepared for the installation of the sculpture, which will be a large, monolithic limestone column, approximately 8 feet high, 4 feet wide, and 2 feet deep.

NOW AVAILABLE!

GET YOURS TODAY!

OUR 2017 EDITION!

Film slated at sanctuary

Thunder Bay National Marine Sanctuary presents a cinematic to film that highlights Earth is the ocean planet. Whether you live a thousand miles from it, the ocean is part of your life. From protecting the weather, the ocean and Great Lakes matter to everyone appropriate for all ages.

PUT YOUR WEDDING, ENGAGEMENT OR ANNIVERSARY PHOTOGRAPHY IN FULL COLOR IN THE ALPENA NEWS

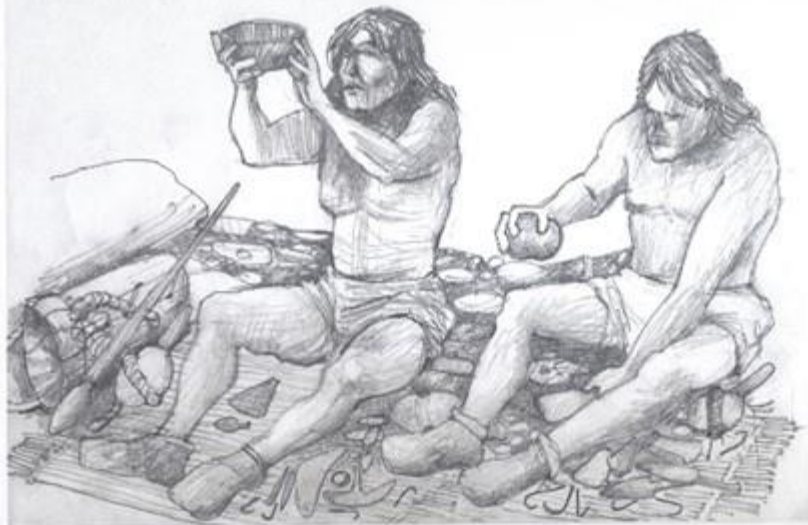
Erwin P. Lewandowski artwork selected for Masters of Drawing Exhibition



Courtesy Photo
Erwin P. Lewandowski artwork selected for Masters of Drawing Exhibition

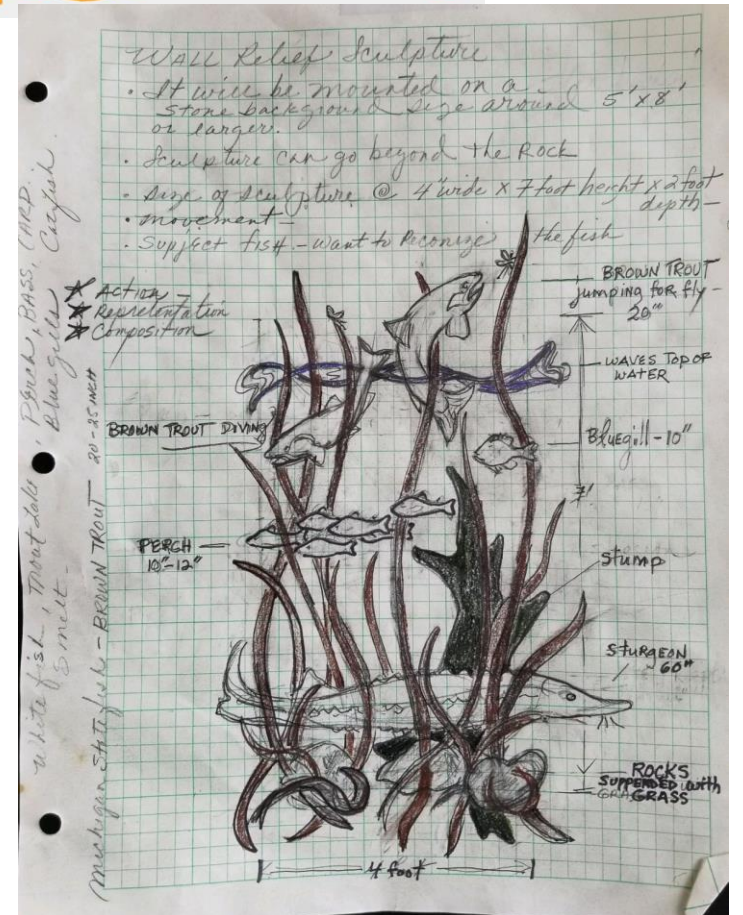
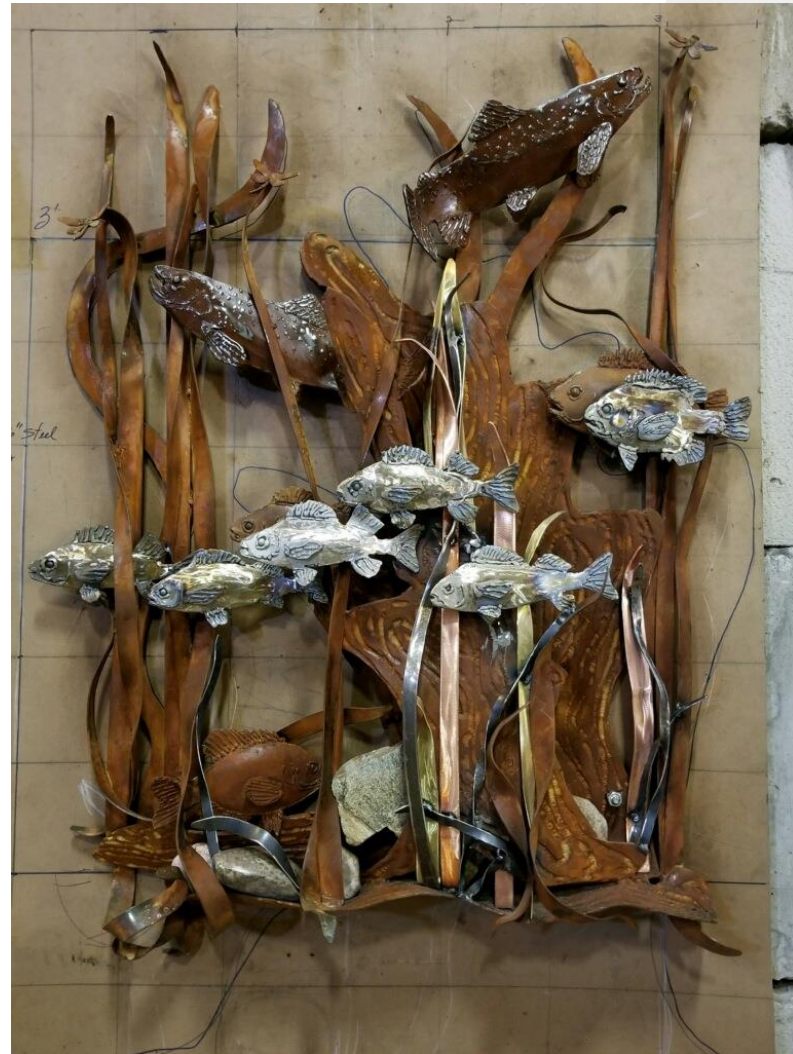
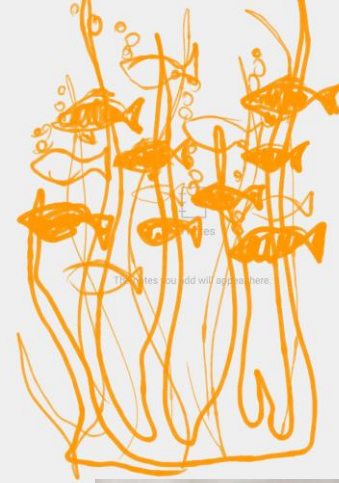
Erwin P. Lewandowski artwork selected for Masters of Drawing Exhibition

Indigenous Copper Workers



















Sculpture 1 – Native American Copper Processing
Mike Lempinen of Negaunee, Michigan

Bas-relief of Native Americans processing copper; Bronze

Sculpture height 2' – width 3'
Stone height 6' – width 7' - weight approximately 7-8 tons
Located on the campus of Alpena Community College
Winter Solstice Sunrise - 131 degrees (Azimuth)

This relief sculpture of two Native Americans titled, *Indigenous Copper Workers*, captures the industry and ingenuity of native peoples who first lived and worked these lands. Tools, weapons and ornaments were fashioned on this very site thousands of years ago and along the Thunder Bay River with copper transported from numerous copper mines throughout Michigan. Artifacts from the era and this very site are on exhibit at the Besser Museum for Northeast Michigan.

Sculpture 2 – Fisheries, Hunting and Farming
Ann Gildner of Iron One Studio, Onaway, Michigan

Collage of indigenous fish; Steel, stainless steel, copper, brass

Sculpture height 4' – width 3'
Stone height 6.5' – width 6' - weight approximately 7-8 tons
Located on the campus of Alpena Community College
Directional South – 180 degrees (Azimuth)

This diverse school of fish made of various metals represents the importance of fishing, hunting and living off the land through the bounty of nature. Both ancient and modern people have used various natural resources to sustain life with nourishment and for enhancing ways of life with trade, recreation and sport. While farming and hunting are equally pivotal to the sustainability of populations and economy throughout the region over time, the importance of sustaining healthy eco-systems and a pristine Sanctuary of the Great Lakes is best represented by this school of fish (Trout, Bluegill, Perch and Crappie) from the fresh waters of the Thunder Bay River and Lake Huron.

Sculpture 3 – Forestry, Timber, Lumber and Paper
Sharon Smithem of Charlevoix, Michigan

Mosaic of white pines along the Thunder Bay River; Clay tile
Thomas Harmon of Alpena, Michigan (Frame; Cedar)

Sculpture height 4' – width 3'
Stone height 9.5' – width 4' - weight approximately 7-8 tons
Located on the campus of Alpena Community College
Winter Solstice Sunset – 245 degrees (Azimuth)

Timber, lumber, and paper production played a significant role in Alpena's economic development from the mid to late 19th Century and into the present, morphing as required to meet market demands. The forests of Northeast Michigan helped build numerous communities, including Detroit and Chicago, and still provide lucrative raw material and recreational opportunities for locals and tourists alike. These 36 tiles in one mosaic represent the forestry, timber, lumber, and paper industries emerging from the forests of the region and how lumbering, water, transportation, and industry are integrally intertwined in an ever-evolving economy with firm foundation in the woods of Northeast Michigan. The White Pine, the Thunder Bay River, and Lake Huron are iconic images of interrelated economies of past, present, and future.

Sculpture 4 - Concrete Technologies
Timothy M. Kuehnlein, Jr. and Jean Stewart

(Alpena Community College and Thunder Bay Arts Council, Inc.)

Kevin Curtis, Brian Siegert, Brandon Ciupka, and Candie Dombroski (Besser Company)

Collage of original Besser Block Machine gears and cams
Sculpture height 5' – width 4'
Stone height 5.5' – width 8' - weight approximately 7-8 tons
Located on the campus of Alpena Community College
Directional West – 270 degrees (Azimuth)

Limestone, cement, and concrete industries have been a mainstay for local economic and educational development since the evolution of the lumber industry in the early 1900s. As the timber resources exhausted, market demand for new technology and economic growth increased. Alpena and all of Northeast Michigan embraced industrial reforms and diversification by virtue of ingenuity and steadfast initiative. The region's presence on the Great Lakes would prove to be a vital component of global trade and transport, ensuring an effective shift towards the cement and concrete markets. Limestone would opportunely prove to be the true "salt of the earth" for future economic development in the region.

Besser Company's rich history in the concrete industry is humbly reflected in the limestone pillars at the center of the entire History of Industry Sculpture Series. The sculptural collection of Besser block machine gears and cams (circa 1929) is representative of the heart and mechanics of closely interrelated technologies and industries that have sustained this community's economy in its most modern manifestations, propelling the region to global relevance.

Lest we forget other economic contributions made by Jesse Besser, the Sculpture Series has been aptly placed on the very spot where the Besser-Churchill Company, a sawmill producing wooden shingles and barrel staves, once stood. A bronze plaque now reclaimed for this installation commemorates Jesse Besser and his contributions to the community and specifically the creation of the original Besser Block Machine.



Sculpture 5 - Healthcare and Education
Scott Stevens of Alpena, Michigan
(Stevens Custom Fabrication)

Relief of helping hands; Aluminum

This silhouette of helping hands represents the fortitude of communities building support structures that enhance strength, creativity, and productivity to make individuals and communities healthy, wealthy, wise, and sustainable. Healthcare and education are pillars supporting community viability and are a legacy of overall economic and community development. They are undercurrents of timeless necessity for a vibrant society/community and comprise the foundation for modern economic and community prosperity. Alpena and Northeast Michigan have a rich history of providing local access to superior healthcare and education, including higher education, for their citizens.

Sculpture height 5' – width 4'

Stone height 5.5' – width 8'- weight approximately 7-8 tons

Located on the campus of Alpena Community College

Summer Solstice Sunset – 313 degrees (Azimuth)

Sculpture 6 - Recreation and Tourism
Jacob Idema of Alpena, Michigan

Hand forged historic high-wheel bicycle; Steel and copper

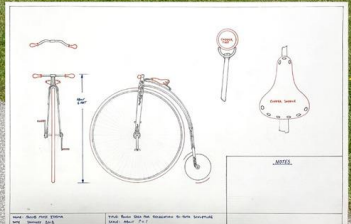
Sculpture height 6' – width 4'

Stone height 7' – width 5'- weight approximately 4 tons

*Located at Washington Avenue Park, corner of Washington Avenue
and S 11th Avenue*











PURPOSE

Art Vision Alpena strives to bring new public art and sculpture to Alpena through a continuation of the Sculptured Bi-Path project in conjunction with the Thunder Bay Arts Council. Art Vision Alpena strives to establish an endowment for sustainability and expansion as well as ongoing preservation and maintenance of all sculpture projects.

GIVING STRUCTURE

- Remington.....\$500 gift
- Rodin\$1,000 gift
- Bernini\$2,500 gift
- Donatello\$5,000+ gift

Michelangelo Commission – Financing the total cost of one sculpture allows you to participate in the selection of the artist, form and installation of the sculpture within the framework of the Art Vision Alpena plan.

Da Vinci Endowment – A \$1,000 per year gift for 5 years can be designated toward a sculpture or ongoing preservation and maintenance.

PROPOSED SCULPTURE SITES

- Chisholm & State
- Bay View Park
- Waterfront Park
- News Park
- Mich-e-Ke-Wis Park
- Washington Park
- Dog Park
- Veteran Park
- Rotary Island
- Sytek Park
- MidMichigan Medical Center

“Make visible what, without you, might perhaps never have been seen.”
 –Robert Bresson

VISION IS THE ART OF SEEING WHAT IS INVISIBLE TO OTHERS.

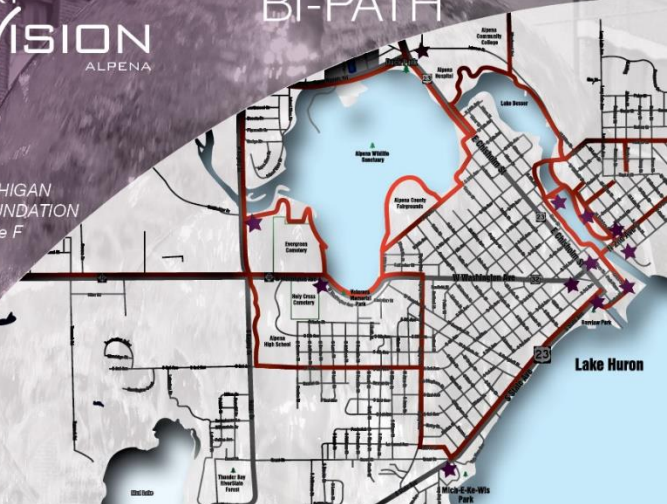
–Jonathan Swift



CONTRIBUTE TO ALPENA'S SCULPTURED BI-PATH



NORTHEAST MICHIGAN COMMUNITY FOUNDATION
 100 N. Ripley, Suite F
 P.O. Box 495
 Alpena, MI 49707
 Ph. 989.354.6881
 www.cfnem.org



CONTINUING THE ORIGINAL VISION

Art Vision Alpena is the continuation of a dream started back in the mid 70's by the Thunder Bay Arts Council as the Alpena Sculptured Bi-Path Project: a celebration of our nation's 200th birthday through art and recreation.

Today, almost 50 years later, we are excited to continue with the original vision and expand upon the initial goal to "recreate with art and nature". Our plan is a bold one, something that will be unique to our community, and one that promises so much in so many ways.

Public art installations throughout town will encourage use of and interaction with our great community. High quality art will generate interest in Alpena and Northeast Michigan as a destination, and it will beautify our town.

Attached you will find a timeline and layout for public art installations in Alpena. It will take a sustained commitment of time, resources, and money to fulfill. We ask for your support of this ambitious and exciting task. Please consider supporting this project through either a one-

time gift or a preferred multi-year commitment. Funding an endowment for sustainability and possible additional sculptures in the future is part of the goal to ensure that existing works are properly preserved and maintained for future generations to enjoy.

Please see the attached timeline for a narrative of the three phases of implementation. We ask for your support of "Art Vision Alpena" and are excited for the beauty and spirit of pride it will bring to Alpena.



Images are intended for conceptual and inspiration purposes only

PHASE 3: 2026 - 2076 – Achieve endowment for sustainability/Long term maintenance

ART VISION ALPENA/THUNDER BAY ARTS COUNCIL, INC. INITIATIVE

Phase 3 – Art Vision Alpena Endowment Fund

As arts and cultural opportunities in Alpena continue to expand and make an even greater impact on our community, each dollar invested now and for the future provides an indelible and lasting expression of our community and the quality of life for the people who live and visit here.

Even a modest contribution from your estate, or designated assets from it, would make a world of difference impacting our community through public sculpture and our ability to sustain and maintain their presence in our community for now and well into the future - forever. Art Vision Alpena's Endowment Fund is a wonderful way to make a durable and lasting difference.

Consider making a donation to promote the arts through the Art Vision Alpena Endowment Fund in the form of a memorial, remembrance, an honor or a legacy in support of a loved one or perhaps yourself.

There are benefits to protecting your family and your legacy of support for the arts in our community with tax and financial protections (benefits) related to income, capital gains, estate and gift taxes. Consider the possibilities when consulting with your financial planner.

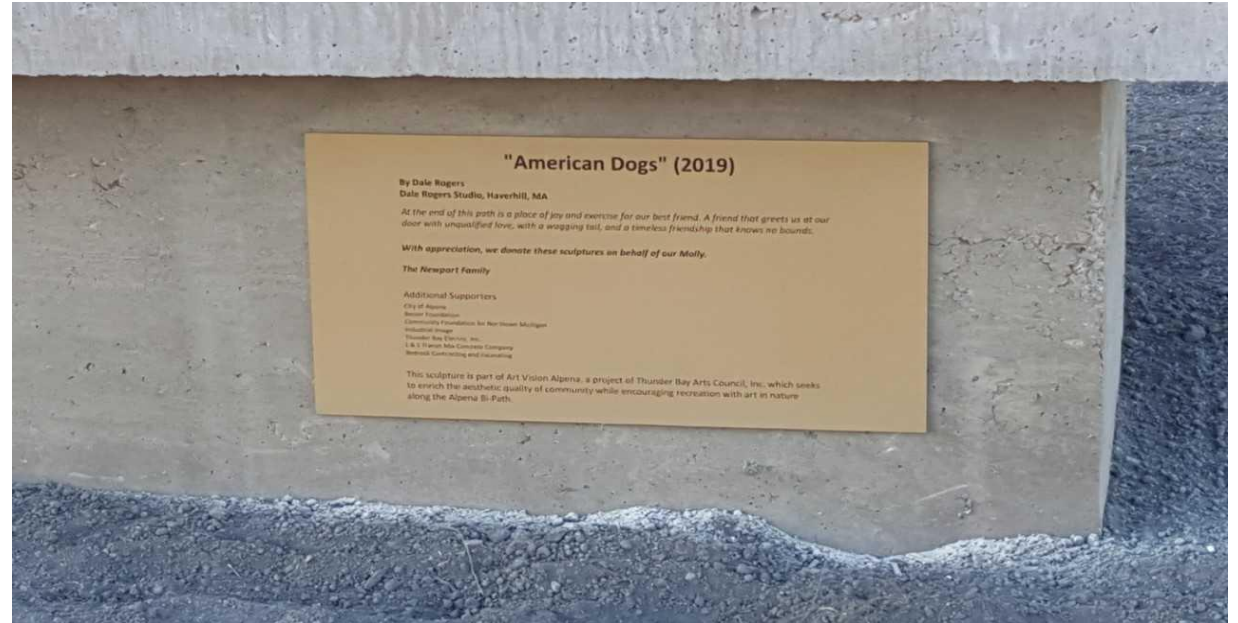
You could support the mission of Art Vision Alpena in perpetuity as you plan your estate, so consider a gift in any form and amount:

- Cash gifts
- Stocks
- Bequests and Wills
- Life Insurance
- Retirement Designations (e.g. IRA, 401k and 403)
- Deferred Gift Annuities
- Charitable Remainder Trusts
- Life Estate Interest
- Gifts of Real-estate
- Contribute directly to the Art Vision Alpena Fund

To consider forms of giving such as planned estate gifts and matching gifts to Art Vision Alpena, please contact the Community Foundation for Northeast Michigan at 989.354.6881.

“For it is in giving that we receive.”
 –Francis of Assisi





"American Dogs" (2019)

By Dale Rogers
Dale Rogers Studio, Haverhill, MA

At the end of this path is a place of joy and exercise for our best friend. A friend that greets us at our door with unqualified love, with a wagging tail, and a timeless friendship that knows no bounds.

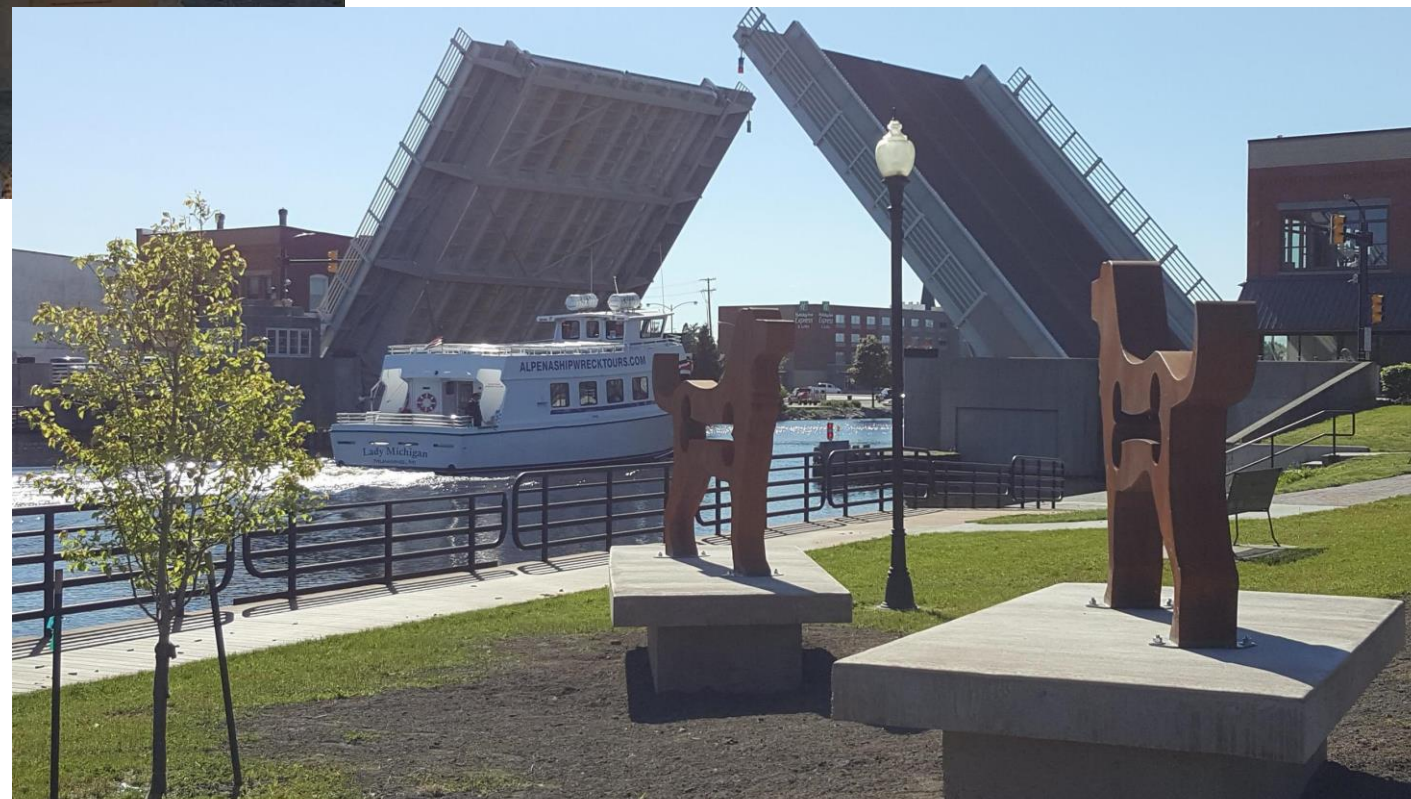
With appreciation, we donate these sculptures on behalf of our Molly.

The Newport Family

Additional Supporters

City of Alpena
Bauer Foundation
Community Foundation for Northwest Michigan
Industrial Image
Thunder Bay Electric, Inc.
L & T Haver, MA Concrete Company
Beechell Contracting and Excavating

This sculpture is part of Art Vision Alpena, a project of Thunder Bay Arts Council, Inc., which seeks to enrich the aesthetic quality of community while encouraging recreation with art in nature along the Alpena Bi-Path.







**A lake is the landscape's most beautiful and expressive feature.
It is earth's eye; looking into which the beholder measures the depth of his own nature.**

Henry David Thoreau

Lake Huron and Thunder Bay have provided access and sustenance to those who have pondered and traversed the waters for millennia. They are crossroads of our history, recreation and industry.

The catboat fleet (c.1950s-1970s) portrayed above reflects the spirit of recreation, and the anchor to the right represents the commercial industry shared by generations on these waters.

This installation is part of Art Vision Alpena, a project of Thunder Bay Arts Council, Inc. which seeks to enrich the aesthetic quality of community while encouraging recreation with art in nature along the Alpena Bi-Path.

This space was rehabilitated in September 2019 with support from the City of Alpena and the Alpena Yacht Club.

Thanks to previous generations who laid the original foundations of this installation.

Special thanks to Elbridge Dunckel, Jon T. Crow, Matt Dunckel, Owen Williams, Patrick Labadie, Wayne Lusardi, Steve Wilson, Angela Addington, Marlo Broad and Bob Lyngos of Special Collections at Alpena County Library, the Alpena Yacht Club Board of Directors, City of Alpena (council and staff), Augie Matuzak and Tim Kuehnlein for rehabilitating this site with interest, information and logistics.



Photograph of Alpena's fleet of catboats on Thunder Bay (c. early 1960s)

Courtesy of Jon T. Crow and the A.B. Crow collection of catboat photographs

12-23-59

Town Talk

It appears that Thunder Bay will have to be closed to Great Lakes shipping on Sunday mornings next summer. Those waters will be too full of 22-foot Catboats manned by family crews to let anything else in. From a three-boat start in 1958, the little sports fleet rose to nine last year, and as of right now, a field of 16 is in prospect for the 1960 season. "What's needed now is a 'dock-stretcher' for berthing the fleet," says Earl Murch, who frequently sails on the Catboat owned by his brother, Orville. The Catboats are all of the same basic design, and all sport a single sail. That leaves race-winning to a large extent up to seamanship and has produced a wonderful spirit of good-natured rivalry, fun and wholesome family recreation. Those Sunday morning races are keenly anticipated by the big group of people involved, and for everyone in town they make a pretty sight on the sparkling waters of the bay. The spirit of the season carried well past the close of sailing this fall, with the year's final event being an Awards Night party at the Yacht Club. Tom Fletcher as emcee put on a better show than anyone there has seen on TV since.

A waterfront addition proposed to the membership and authorize construction and include a membership earlier. The building is pictured.

Committee reports were made for the April 24 meeting for members and guests. A pot luck supper will precede the social evening.

The new section would increase activity. The project was tentatively adopted by the building. A sketch of the proposed one-story

proposed one-story section in front of

past the close of sailing this fall, with the year's final event being an Awards Night party at the Yacht Club. Tom Fletcher as emcee put on a better show than anyone there has seen on TV since.

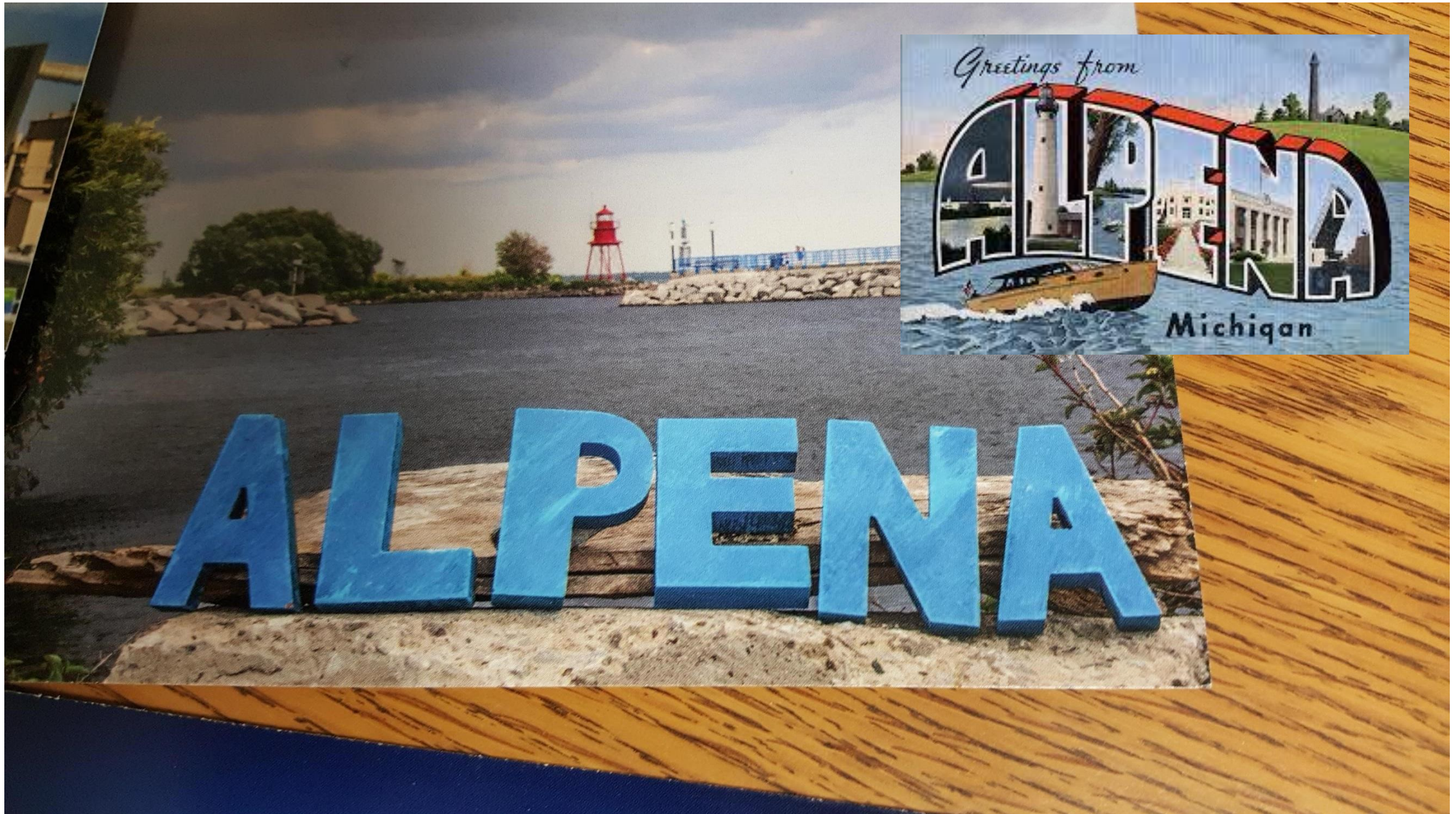


*NEW SKIPPER*S in this family league when the ice goes out next spring will be Fred Taber, Art Brainerd, Jack Doyle, Leo Linke, Jerry Kuchnicki, Dr. Ray Py and Dr. Bruce Kane. All have purchased boats since fall. The nine veterans are George Wilson (season champ in 1959), Bob Beaudry, Orville Murch, Jack Snyder, Marvin Snider, Charles (Chub) White, Tom Fletcher, Dr. Fred O'Dell and Neil Jackson. Murch, Wilson and Beaudry were the originals in the 1958 inaugural year of Catboating on Thunder Bay.



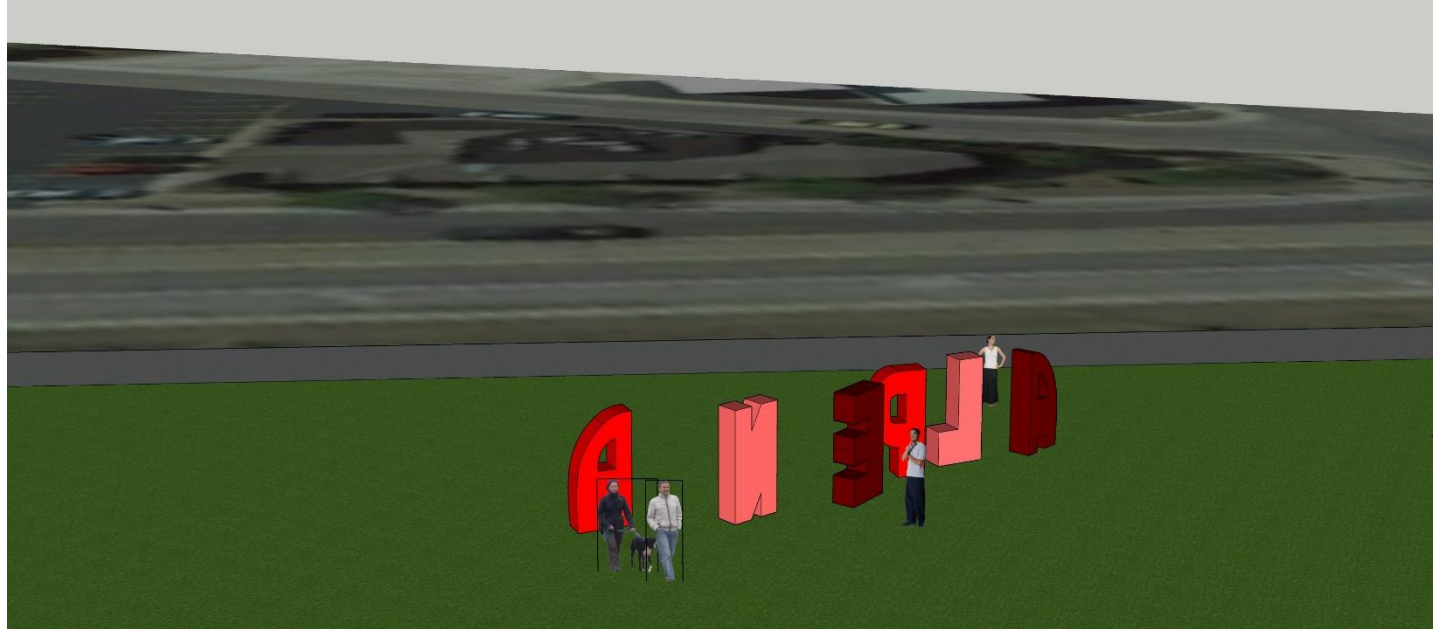


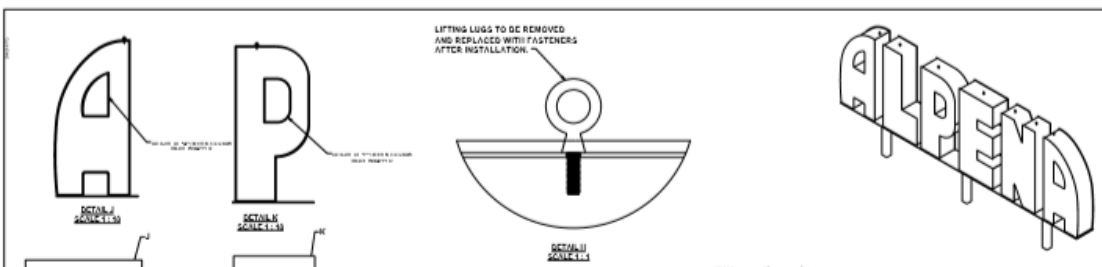
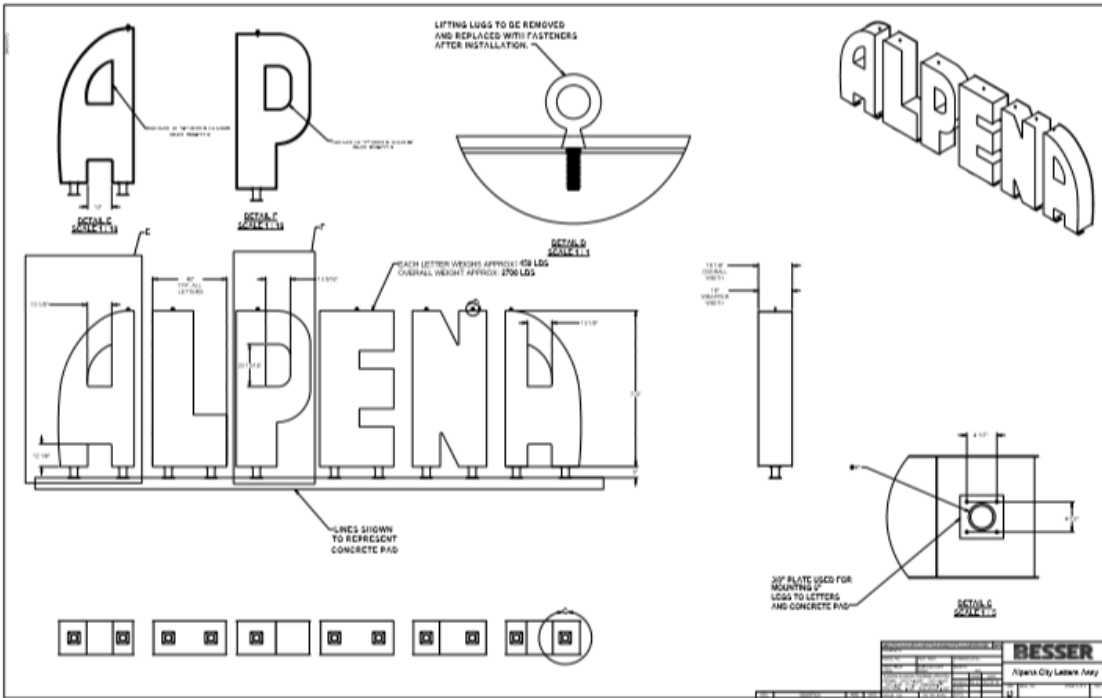
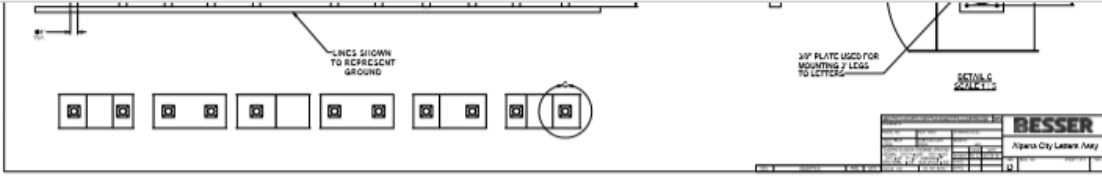


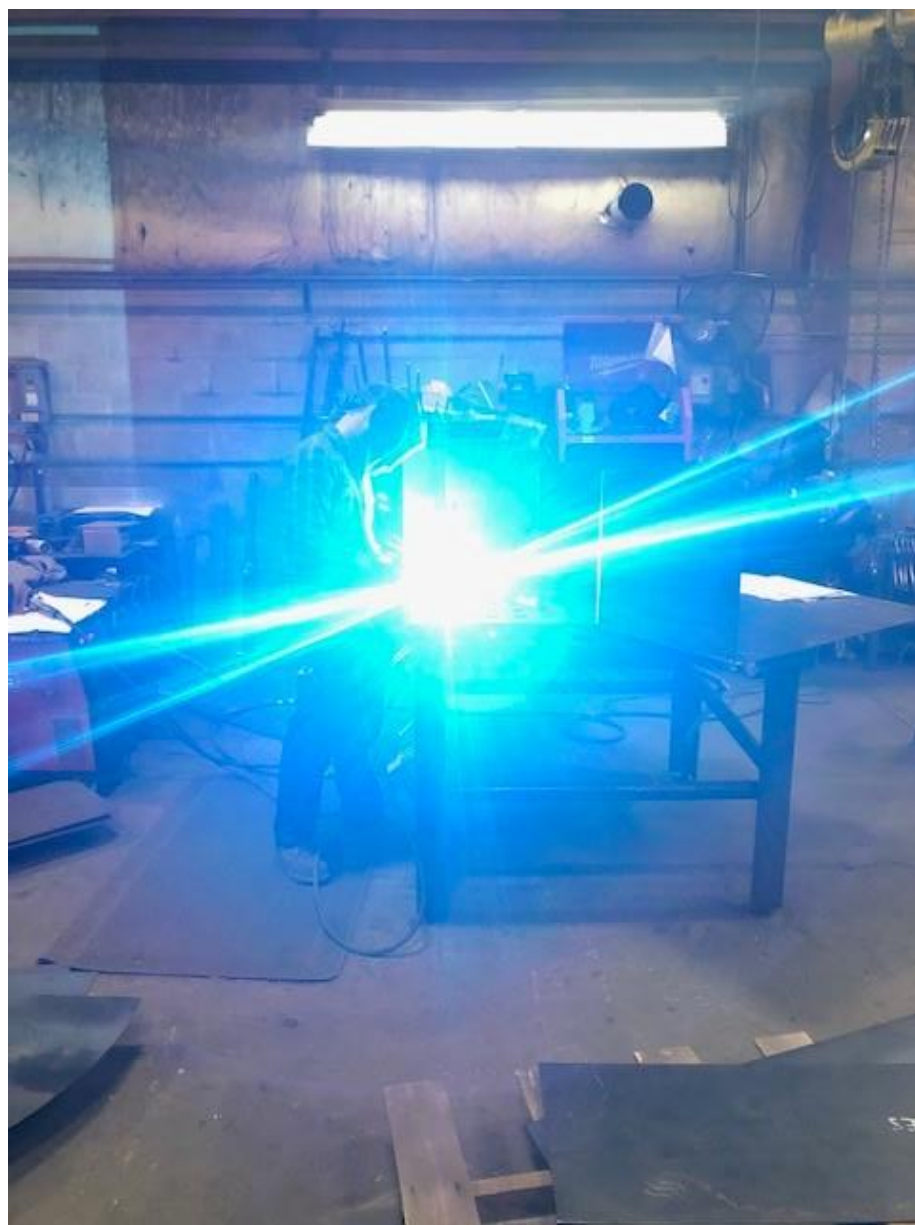
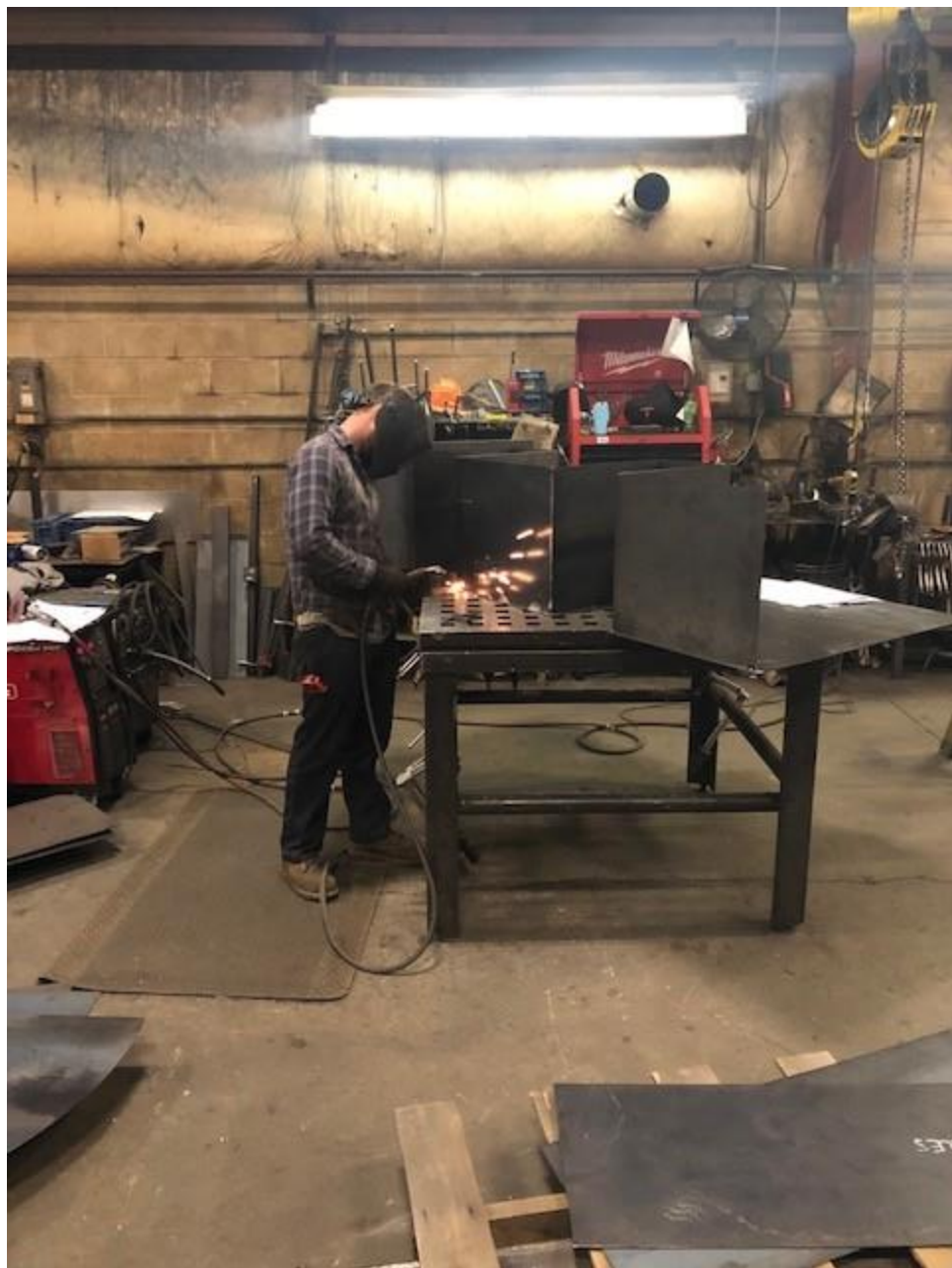


ALPENNA



















Martin Luther King Jr. Committee essay contest underway

ALPENA -- What does it mean to create a beloved community? In answering this question, Alpena junior and high school students have a chance to win \$1,000.

The Martin Luther King, Jr. Committee of Alpena is accepting entries for their essay contest celebrating the work of the Civil Rights Movement.

Entries will be accepted into two groups, grades 6-8, and grades 9-12.

Essay prizes will be awarded for first place and for second place for each group.

Winners may be invited to read their essays on a stage to be determined in early 2021.

Guidelines for the essay contest are listed here.

Essays for grades 6-8 should be from 300-500 words.

Essays for grades 9-12 should be from 500-800 words.

The Martin Luther King, Jr. Committee believes in a Beloved Community where...

International disputes should be resolved by peace, conflict-resolution and...



Martin Luther King, Jr. Committee members hold the colorful "Creating A Beloved Community" banner in front of the newly installed "Alpena Letters Sculpture" at Mich-e-ke-wis Park on State Avenue in Alpena. Pictured from left to right are the Rev. Bill McClure, Pastor Tom Orndorff, Sandra Pilgrim-Lewis, Sheri Stuart, and Dottie Haase.

Courtesy P...

22"

Alpena Letters Sculpture (2019)

By Besser Company

The Alpena Letters Sculpture serves as an inviting welcome to those who visit and build their livelihoods on the open shores and spaces of northeast Michigan.

Each letter represents individuals that together comprise community. The letters spell a cohesive place to call home: ALPENA.

In what is quintessential Alpena, the letters stand boldly at the edge of Michi-e-ke-wis Park. Fun and whimsically positioned, they welcome everyone to Alpena and all it has to offer with the interplay of the arts, culture, nature, recreation and industry.

The Alpena Letters Sculpture is inspired by a photography exhibit of local artist Brandinn Keetch and reflects an iconic historic Alpena postcard.

Besser Company and its skilled craftsmen provided structural engineering and fabrication of the large-scale letters, which are made of 10-gauge steel, powder coated in red. They measure 7 feet in height, 3.3 feet in width, 1.5 feet in depth, weighing about 465 to 575 pounds each - 3,000 pounds combined.

Similar large-scale letter installations exist in cities around the world such as Porto (Portugal), Amsterdam (Netherlands) and Philadelphia, PA (US).

This installation is part of Art Vision Alpena, a project of Thunder Bay Arts Council, Inc., which seeks to enrich the aesthetic quality of community while encouraging recreation with art in nature along the Alpena Bi-Path.

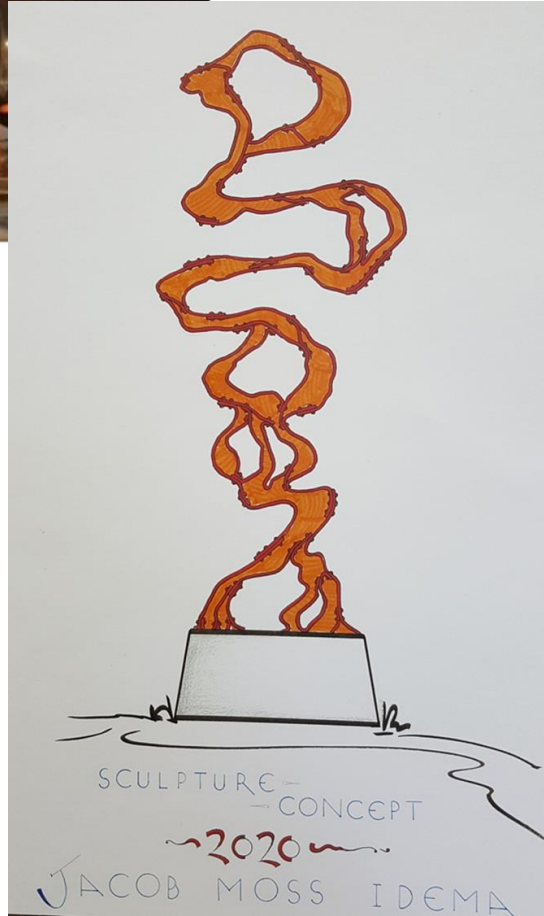
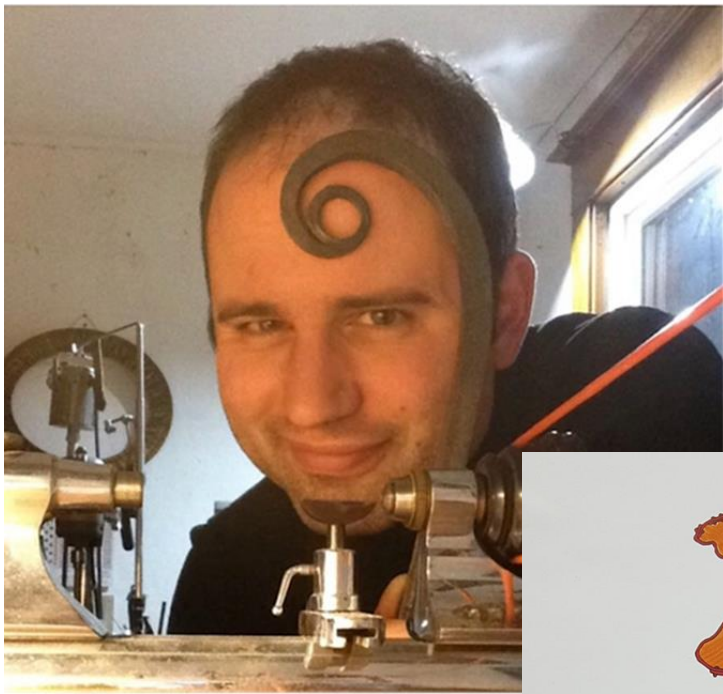
Special thanks to the following for their resources, time, dedication, expertise and logistics to accomplish this project:

Besser Company
Besser Foundation
City of Alpena
Community Foundation for Northeast Michigan
Thunder Bay Arts Council, Inc.
Art Vision Alpena Advisory Committee
August and Peggy Matuzak
Tim Kuehnlein and Todd Russell

O'Connor Family
Bedrock Contracting & Excavating, LLC
L&S Transit Mix Concrete Co.
R.S. Scott Associates, Inc.
Thunder Bay Electric, Inc.
L&N Greenway
Fitzpatrick Hardware
Omega Electric & Sign Company, Inc.

A special thank you is extended to Brian Siegert, Travis O'Connor and Bryan DeCare for their dedication to this project.

Special thanks to Jeff Frantz, Brandon Ciupka, Brody Roznowski, Jeremy Scheske, Austin Girard, Bret Schalk, Spencer Wiedbrauk, Jeff Carriveau and the Steelworkers L199 and L209 for their work crafting the letters.



The River Intertwined (2020)

By Jacob Moss Idema

Alpena, Michigan

Hand-forged abstract sculpture; steel

Sculpture height 12.5' - width 6' - weight approximately 1,000 pounds

Washington Avenue Park

This sculpture is a reflection of the intertwining of nature and life. It symbolizes the timeless beauty of the Thunder Bay River and the trees and forests that grace its banks. River and tree are lifelines of community having sustained various phases of human development for millennia, providing sustenance and transportation, recreation and industry.

This installation is part of Art Vision Alpena, a project of Thunder Bay Arts Council, Inc., which seeks to enrich the aesthetic quality of community while encouraging recreation with art in nature along the Alpena Bi-Path.

This sculpture is made possible with substantial financial and material resources from the following:

Besser Foundation
City of Alpena
Community Foundation for Northeast Michigan
First Federal Legacy Foundation
Bedrock Contracting & Excavating, LLC
O'Connor Family
L&S Transit Mix Concrete Company
Thunder Bay Electric, Inc.
R.S. Scott Associates, Inc.
August and Peggy Matuzak
Bruce and Midge Connon
Tim Kuehnlein and Todd Russell
Anonymous
Thunder Bay Arts Council, Inc.
Art Vision Alpena Advisory Committee of Thunder Bay Arts Council, Inc.

The following Patrons of Thunder Bay Arts for 2019-2020, including donors of the 2019 Giving Tuesday campaign, help ensure that the arts endure with projects like this throughout both good and challenging times, the 2020 pandemic and beyond. Their steadfast support is so very much valued. Thank you!

This sculpture is dedicated to all who met the challenges along life's path associated with the Covid-19 pandemic of 2020 and to those who lost their lives in its course.

The Patrons of Thunder Bay Arts for 2019 - 2020

Mike & Esther Ableidinger
Thomas & Lois Allum
Ken & Nancy Amelotte
Robert & Iris Arthur
Dennis & Janet Artley
Dr. & Mrs. Avery Aten
Jason & Angela Bacchus
Harper Barnett
Gail Barr
Mr. & Mrs. Roger Baumgardner
Carol Beatty
Mr. & Mrs. James Berles
Janice Boboltz
James & Johanna Bowen
Rosalyn Boyer
Mr. & Mrs. Richard Bremer
Thomas & Karen Brindley
Ed & Pat Buck
Dr. James & Cecelia Bullen
Marty Cattleberry
Robert & Judith Case
Jim & Claudia Chapman
Thomas Christensen
Larry & Debra Clark
Bryce & Stephanie Collman
Mary Comar
Larry & Jodene Compton
Bruce & Midge Connon
Eric & Shelly Cornish
Karen Cracchiolo
MaryAnn K. Crawford
Curt & Shari Davis
Marga Decker
Ann Diamond
Bob & Wanda Discher
Bryan Donakowski
Dennis & Sandy Doubek
Jere Doyle
Jerry & Marsee Dubie
Elbridge & Marion Dunckel
Lynn & Shauna Field

Herb & Pat Gamage
Michael Garant
Corky Gates
Dawn Gentry
Jorge & Rowena Gonzalez
Susan Haight
Tom & Anita Harmon
Chuck & Jan Herring
Pat Hummel
Monte & Diane Jahnke
Kathy Johnson
Ken & Judy Jones
Richard & Cheryl Kaye
Diana Kelly
Clint Kendziorski
Carol E. Kindt
Mr. & Mrs. Mark Kinney
Edward Klimczak, Jr.
Mary Kay Kline
John & Jule Kowalski
Tim Kuehnlein & Todd Russell
Larry Kunze
Lew & Kathryn Kunze
Mark J. LaCross
Ed & Stephanie LaFramboise
Kara LaMarre
Bernie & Nancy Lamp
Tom & Mary Lappan
Richard Lefevre
Ron & Cheryl Lemke
Tom & Lois Marshall
August & Peggy Matuzak
Jim & Betty Masters
Jim Mazer
Rev. William & Deborah McClure
Karen McConnell
Kathleen McGillis
Kati MEEK
Ken & Janice Melville
Kim & Michelle Miller
Barbara Mink

Anne Nave
Barry Nelson
Gordon & Vernie Nethercut
Mary Neubert
Linda Norton
Mr. & Mrs. Bernard O'Brien
Pam O'Neil
Ron & Susan Ott
Roger & Sue Phillips
Marian Prieur-Bastow
Doug & Lea Ellen Pugh
Carey Rapin
Gene & Judy Reimann
Sharon Rickard
Rocky & Ginny Roland
Harold & Ann-Marie Ruder
Jim & Pat Shaffer
Elaine C. Smith
Gordon Snow
Beverly Sparling
Don & Jane Speer
Mr. & Mrs. William Speer
Don & Jean Stewart
Henry & Florence Stibitz
Bob & Mickey Strong
Linda Suneson
James Szczukowski
Douglas Taratuta
Elaine Thompson
Thunder Bay Arts Community Chorus
Sonya Titus
Keith & Joyce Wallace
James & Susan Weeks
Barbara Weisenburg
Chuck & Julie Wiesen
Richard Willis
Dahris Wilson
Roger & Carol Witherbee
Mary K. Wolf
Bronwyn Woolman
Dolly Zeller

Business/Corporations:

AHS CTE Program
Wade & Sandy Corpus
Brad & Spencer Corpus
Home Depot
JIBB, LLC
Neiman's Family Market
R.S. Scott Associates, Inc.
Schulze, Oswald, Miller, Edwards, PC

Grants:

Besser Foundation
City of Alpena
First Federal Legacy Foundation

In Memory:

Avis Hinks





Regatta Sails (2021)

By Ann Gildner

Recreating with art in nature! Aside from sailing along the horizon with a sunrise or sunset moon, what better way is there to capture the spirit of recreating with art in nature than with a sculpture of a sailboat in full regatta.

Conceived in 1974-76 to commemorate the nation's Bicentennial, the Alpena Bi-Path (originally the Alpena Sculptured Bikeway and Walkway) was intended to feature public sculptures along the way. *Sculptured Fountain* at Besser Museum was the first sculpture in 1978 and the last until the 45th Anniversary of Thunder Bay Arts Council, Inc. when the sculpture component of the Bi-Path plan was resurrected.

Since inception the Alpena Bi-Path has been extended to nearly 20 miles throughout the center of the Alpena community. Since 2017, more than a dozen new sculptures have been added along the Alpena Bi-Path. Sculptures of various genre and materials depict the themes of running waters of the forest, blue herons, armillary globe, history of industry series, celebration of American dogs, Alpena Pride, cat boats, the Thunder Bay River and water and limestone.

It is only right that sailing be added to the collection of themes as it symbolizes a major part of industrial and recreational life along the shores of Lake Huron and at the center of the rich nautical history of Thunder Bay. From the youthful Ynglings and yachts that sail about the horizon to Alpena's historic fleet of catboats and the collection of shipwrecks that have graced these waters, *Regatta Sails* symbolizes the spirit of nautical life, industry and recreation at Thunder Bay, Alpena.

With the winds and currents of the waters off these shores leading the way for generations who make their way to and from, Bay View Park serves as a splendid venue for this commemorative sculpture celebrating recreation with art and the 50th Anniversary of Thunder Bay Arts Council, Inc. (1971-2021), proud to be among the oldest continuous arts councils in the State of Michigan.

This installation is part of Art Vision Alpena, a project of Thunder Bay Arts Council, Inc., which seeks to enrich the aesthetic quality of community while encouraging recreation with art in nature along the Alpena Bi-Path.

Special thanks to the following for their resources, time, dedication, expertise and logistics to accomplish this project:

Alpena County Youth and Recreation Committee
Besser Foundation
City of Alpena
Alpena Agency, Inc.
Chad & Sharon Esch
Thunder Bay Arts Council, Inc.
Art Vision Alpena Advisory Committee

Bedrock Contracting & Excavating, LLC
The O'Connor Family
L&S Transit Mix Concrete Company
Thunder Bay Electric, Inc.
August and Peggy Matuzak
Tim Kuehnlein and Todd Russell
Jean and Don Stewart
Midge and Bruce Connon

The Patrons of Thunder Bay Arts for 2020 - 2021

Mark Addington

Ken Amelotte

Ray & Kathy Anderson

Robert & Iris Arthur

Dr. & Mrs. Avery Aten

Richard & Marilyn Bachelor

Eugene & Karen Bacon

Roger & Christine Baumgardner

Donna Bautel

Carol Beatty

Mr. & Mrs. Charles Bennett

Mr. & Mrs. James Berles

Janice Boboltz

Dr. Lee & Harriett Britton

Bob & Pauline Buchner

Ed & Pat Buck

Marty Cantleberry

Jim & Claudia Chapman

Larry & Jodene Compton

Bruce & Midge Connon

Eric & Shelly Cornish

Vincent & Karen Cracchiolo

MaryAnn K. Crawford

Marga Decker

Ann Diamond

Dennis & Sandra Doubek

Jerry & Marsette Dubie

Bob & Sue Eller

Lynn & Shauna Field

Jim & Ann Florip

Herb & Pat Gamage

Michael Garant

Dawn Gentry

Mr. & Mrs. Charles Giordano, Jr.

Jorge & Rowena Gonzalez

Rachel Goodstein

Mr. & Mrs. Ben Grandlund

Robert & Jan Haase

Mr. & Mrs. William Haase

Ann Hardesty

Tom & Anita Harmon

Chuck & Jan Herring

Mark Hunter

Jay & Sue Johnston

Diana Kelly

Clint Kendziorski

Mr. & Mrs. Mark Kinney

Edward Klimczak, Jr.

John & Julie Kowalski

Tim Kuehnlein & Todd Russell

Lew & Katherine Kunze

Ed & Stephanie LaFramboise

Maggie Lamb

Bernie & Nancy Lamp

Tom & Mary Lappan

Tom & Joan Lavoie

Ruth Ann LeBarre

Richard Lefevre

Ron & Cheryl Lemke

Pat Manning

August & Peggy Matuzak

Karen McConnell

Kathleen McGillis

Ken & Janice Melville

Kim & Michelle Miller

Tina Montgomery

Anne Nave

Gordon & Vernie Nethercut

Northeast Michigan Artist Guild

Linda Norton

Pam O'Neil

Ron & Susan Ott

Gail Passino

Roger & Sue Phillips

Marian Preiur-Bastow

Carey Rapin

Rocky & Ginny Roland

Elaine C. Smith

Gordon Snow

Mr. & Mrs. Robert Stacey

Leah Stafford

Don & Jean Stewart

Dr. & Mrs. Henry Stibitz

Mickey L. Strong

Dan & Jeanne Szymanski

Douglas Taratuta

Andrew Tarkington, DDS

Thunder Bay Basket Guild

Chuck & Julie Wiesen

Richard Willis

Dahris Wilson

Christine Witulski

Mary K. Wolf

Honor

Jim Arbuckle

Clint Kendziorski

Tim Kuehnlein

Dennis & Ruth Rabeau Grandchildren

Anne Gentry & Don LaBarre

Business/Corporations

AHS CTE Program

Alpena Agency

Bannan Funeral Home (Chad & Sharon Esch)

Plowman's Collision

Rotary Club of Alpena

SOME CPA's

Memorial

Roy R. Bartz

Loretta Beyer

Dale Kendziorski

Bill Maxwell

Gordon Nethercut

Ginny Titus

Live Performance Art

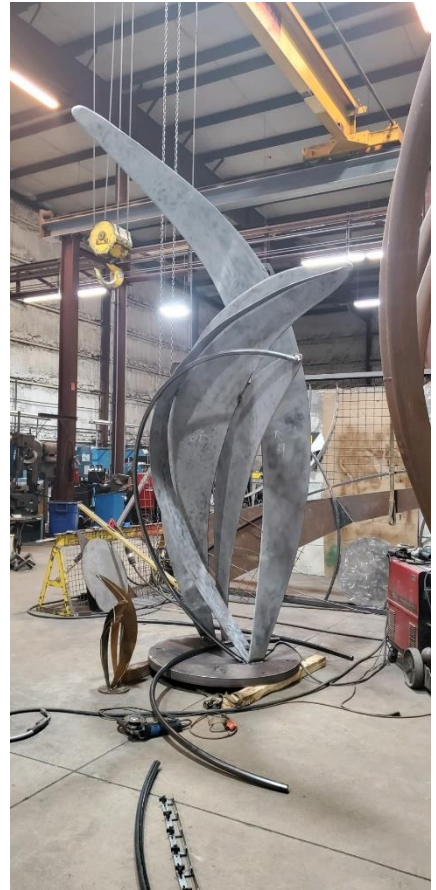
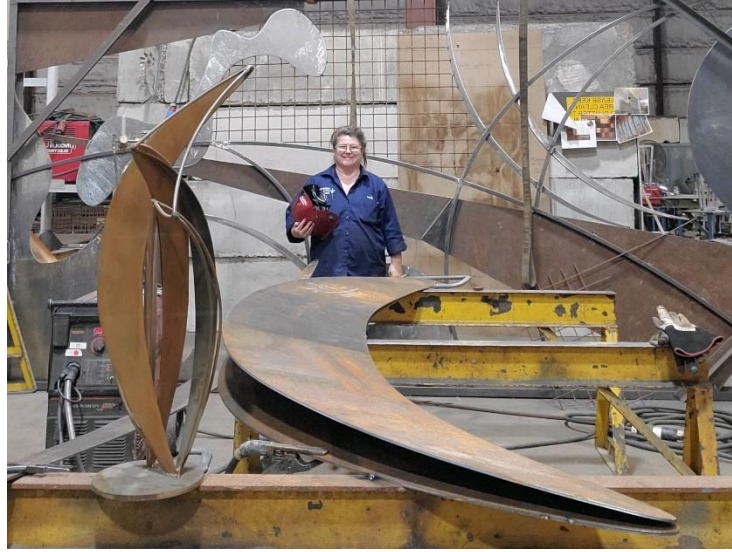
Grants

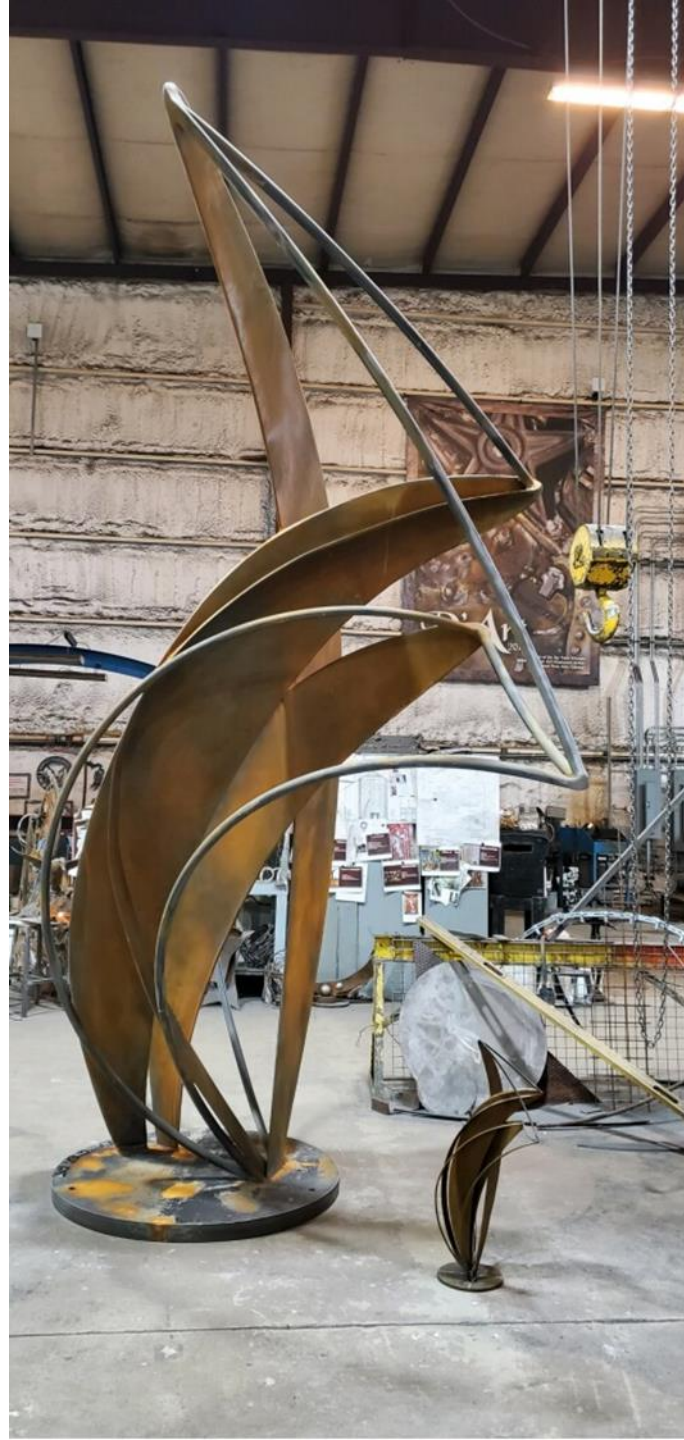
Alpena County Youth and Recreation

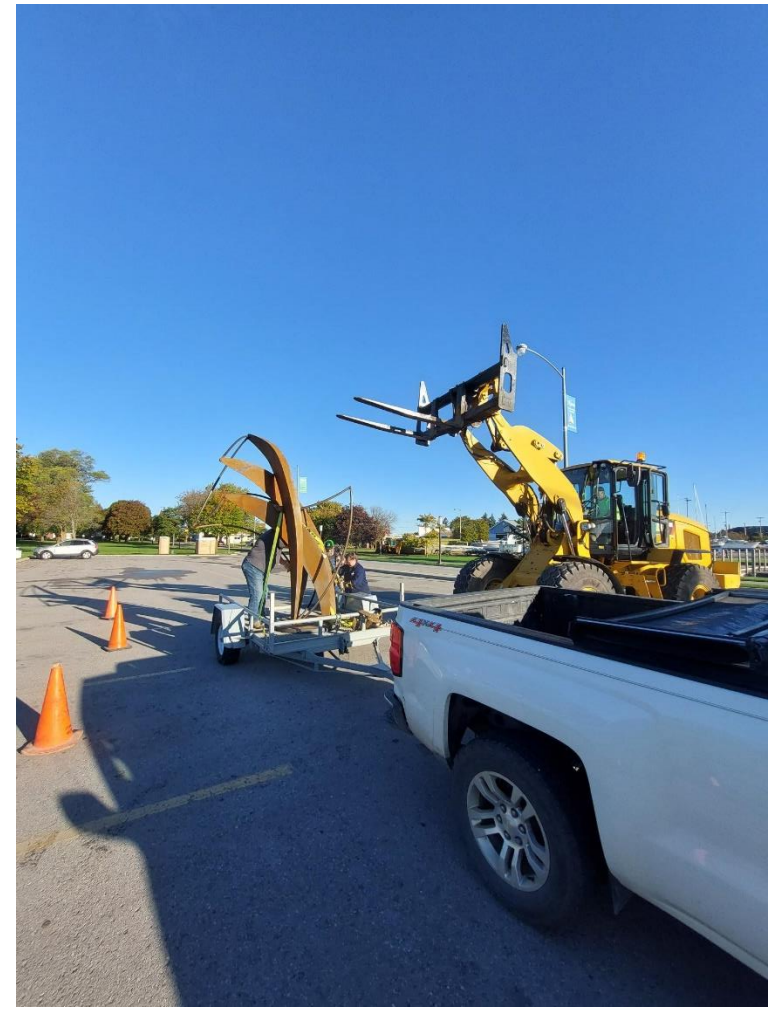
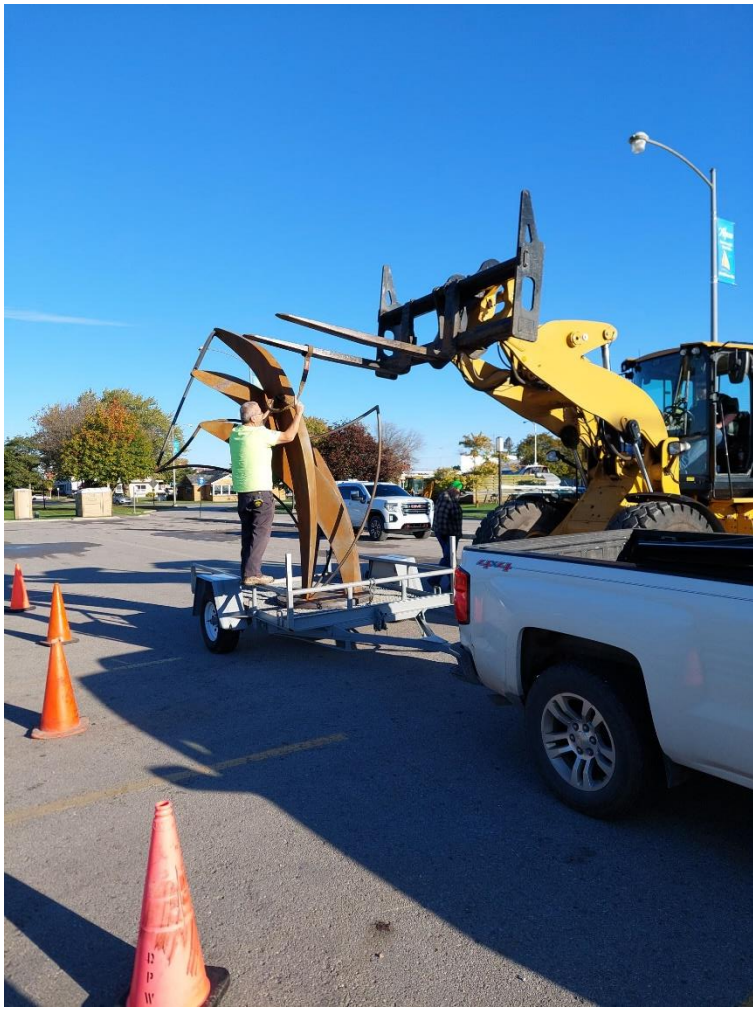
Besser Foundation

City of Alpena

Community Foundation for Northeast Michigan

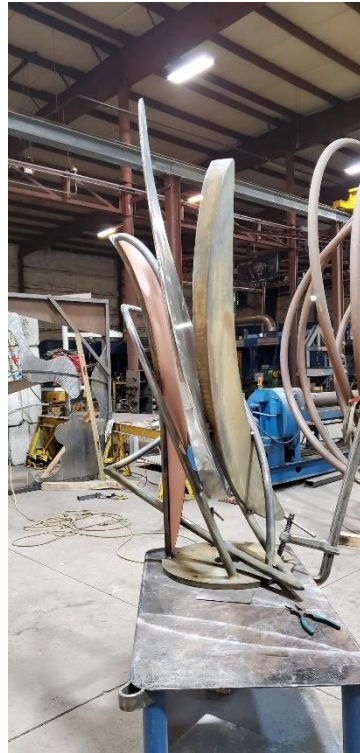


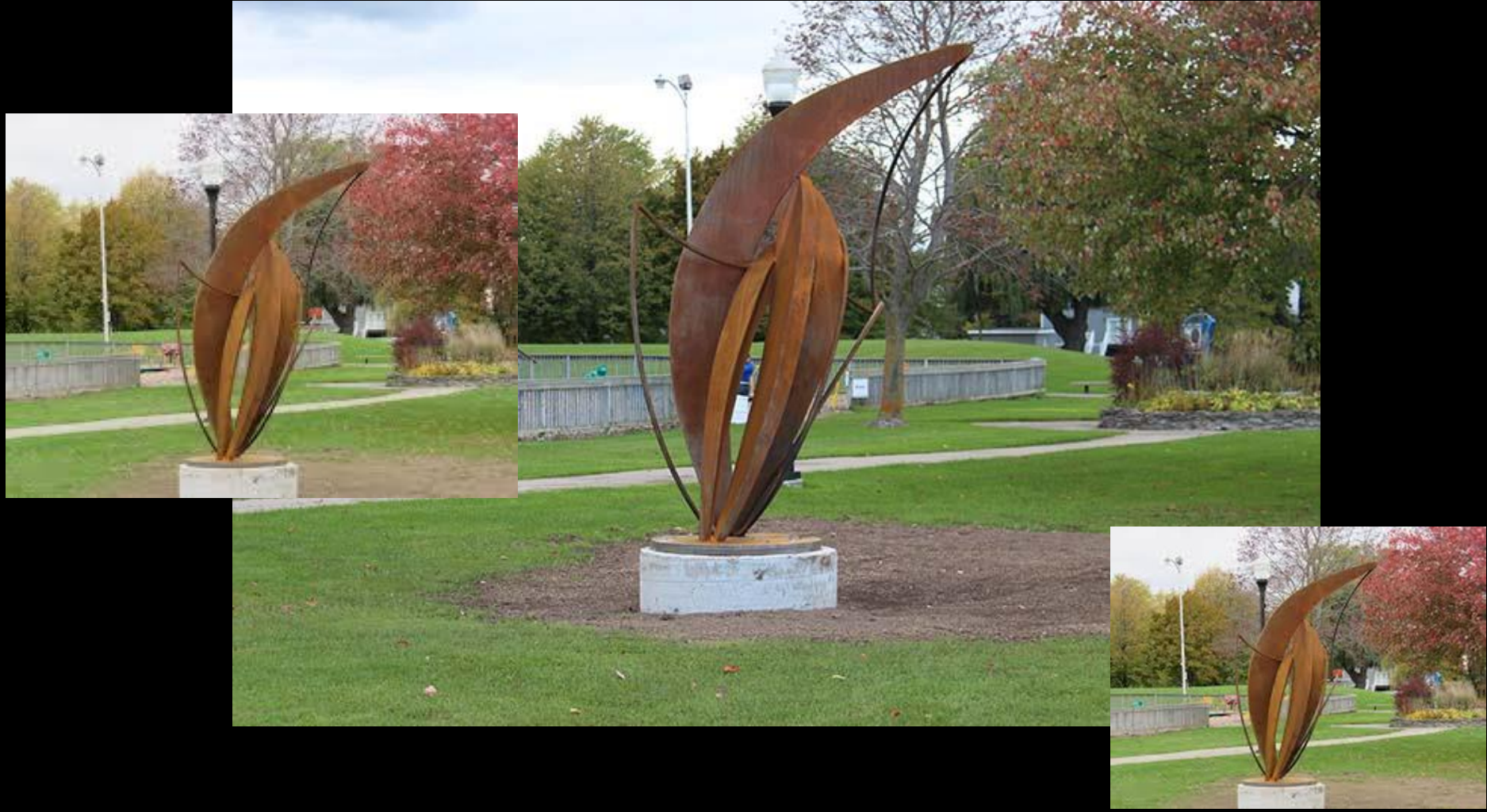














PURPOSE
 Art Vision Alpene strives to bring new public art and sculpture to Alpene through a combination of the Sculptured Bi-Path project in conjunction with the Thunder Bay Arts Council, Inc. Art Vision Alpene strives to establish an endowment for sustainability and expansion as well as ongoing preservation and maintenance of all sculpture projects.

GIVING STRUCTURE

- Memorandum of Understanding — \$100 gift
- Stake — \$1,000 gift
- Donor — \$2,000 gift
- Donor — \$5,000 gift

Multi-Stage Commitment — Financing the total cost of one sculpture allows you to participate in the selection of the artist, form and installation of the sculpture within the framework of the Art Vision Alpene plan.

De Vries Endowment — A \$1,000 per year gift for 5 years can be designated toward a sculpture or ongoing preservation and maintenance.

PROPOSED SCULPTURE SITES

- Chaplain's Square
- Bay View Park
- Marathon Park
- James Park
- Michigan Valley Park
- Wauvegon Park
- Clay Park
- Walden Park
- Alamy Island
- Island Park
- Mid-Michigan Medical Center

VISION is THE ART OF SEEING WHAT IS INVISIBLE TO OTHERS.
 —Jonathan Swift

CONTRIBUTE TO ALPENA'S SCULPTURED BI-PATH

LEAVE A LEGACY OF PUBLIC ART & SCULPTURES

ART VISION ALPENA

NORTHEAST MICHIGAN COMMUNITY FOUNDATION
 10150 Alpena Street
 P.O. Box 800
 Alpena, MI 49707
 Phone: 517-352-4100
 Fax: 517-352-4100
 www.cmfncf.org

Make visible what, without you, might perhaps never have been seen.
 —Richard Scarry

CONTINUING THE ORIGINAL VISION

Art Vision Alpene is the continuation of a vision started back in the 1970s by the Thunder Bay Arts Council, Inc. and the Alpena Sculptured Bi-Path Project. A collection of the Alpena Sculptured Bi-Path Project. A collection of the Alpena Sculptured Bi-Path Project. A collection of the Alpena Sculptured Bi-Path Project.

Public art installation throughout town will encourage use of and interaction with our great community. High quality art will generate interest in Alpena and Northeast Michigan as a whole, and it'll benefit our town.

Art Vision Alpene will find a trustee and honor for public art installations in Alpena. It will take a combination of time, resources, and money to make. We ask for your support of this wonderful and exciting task. Please consider supporting this project through either a one-time gift or a preferred multi-year commitment. Funding an endowment for sustainability and ongoing maintenance is one of the most important parts of the plan to ensure that sculpture projects are properly preserved and maintained for future generations to enjoy.

Please see the attached timeline for a narrative of the three phases of implementation. We ask for your support of Art Vision Alpene and are excited for the beauty and spirit of public art being brought to Alpena.

PHASE 1: 2018 - 2023 (5 sculptures)

2018	2019	2020	2021	2022	2023
------	------	------	------	------	------

PHASE 2: 2023 - 2028 (Add at least 6 more sculptures)

2023	2024	2025	2026	2027	2028
------	------	------	------	------	------

PHASE 3: 2028 - 2033 (Add at least 6 more sculptures)

ART VISION ALPENA/THUNDER BAY ARTS COUNCIL, INC. INITIATIVE

ART VISION ALPENA/THUNDER BAY ARTS COUNCIL, INC. INITIATIVE

Consider making a donation to promote the arts through the Art Vision Alpene Endowment Fund in the form of a monetary contribution, an honor or a legacy in support of a loved one or partner present.

There are benefits in presenting your family and your legacy of support for the arts in our community with tax and financial protection benefits meant to increase capital gains, reduce and gift taxes. Consider the possibilities when consulting with your financial planner.

For it is in giving that we receive.



thunderbayarts.org/copy-of-youth-core



THUNDER BAY ARTS

HOME ARTS 50TH ANNIVERSARY THE ARTS SUPPORT CONTACT

Upcoming INSTALLATIONS

The River Intertwined - 2020
 by Jacob Moss Idema
 Arriving in May 2021

UP NEXT

Regatta Sails - 2021
 by Ann Gildner
 Arriving in September 2021
 Consider a donation

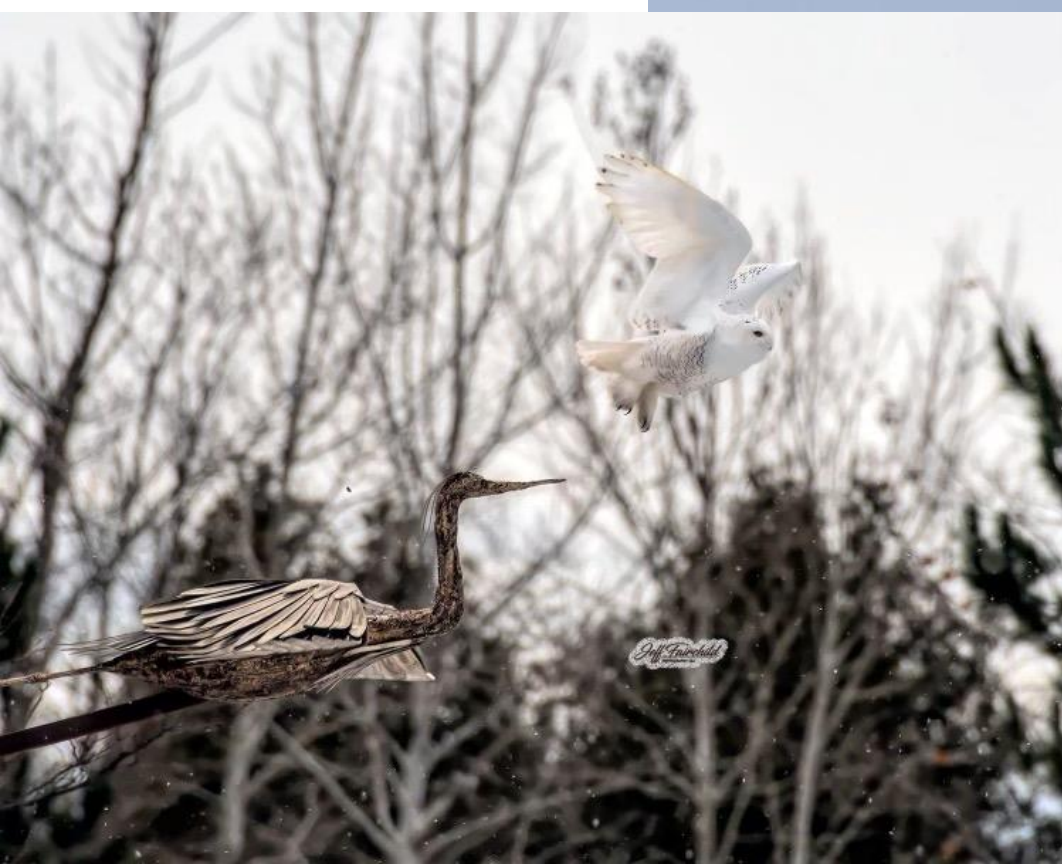
ART VISION ALPENA, a project of Thunder Bay Arts

Art Vision Alpene strives to bring new public art and sculpture to Alpene through a continuation of the Sculptured Bi-Path project. As a re-energized project of Thunder Bay Arts Council, Inc., Art Vision Alpene strives to establish an endowment for sustainable expansion as well as ongoing preservation and maintenance of sculpture projects along Alpene's Bi-Path.

PLEASE DONATE

Please designate *Regatta Sails* sculpture if donating online at this website. Send us an email indicating the intent of your donation. Or contact the TBA Office at 356.6678 for details about donating through the Community Foundation for Northeast Michigan and the Art Vision Alpene Fund.





Goal - Next 5 years

15. 2022 - Water in Limestone Sculpture

16. 2023 – Fish/Fishing Sculpture

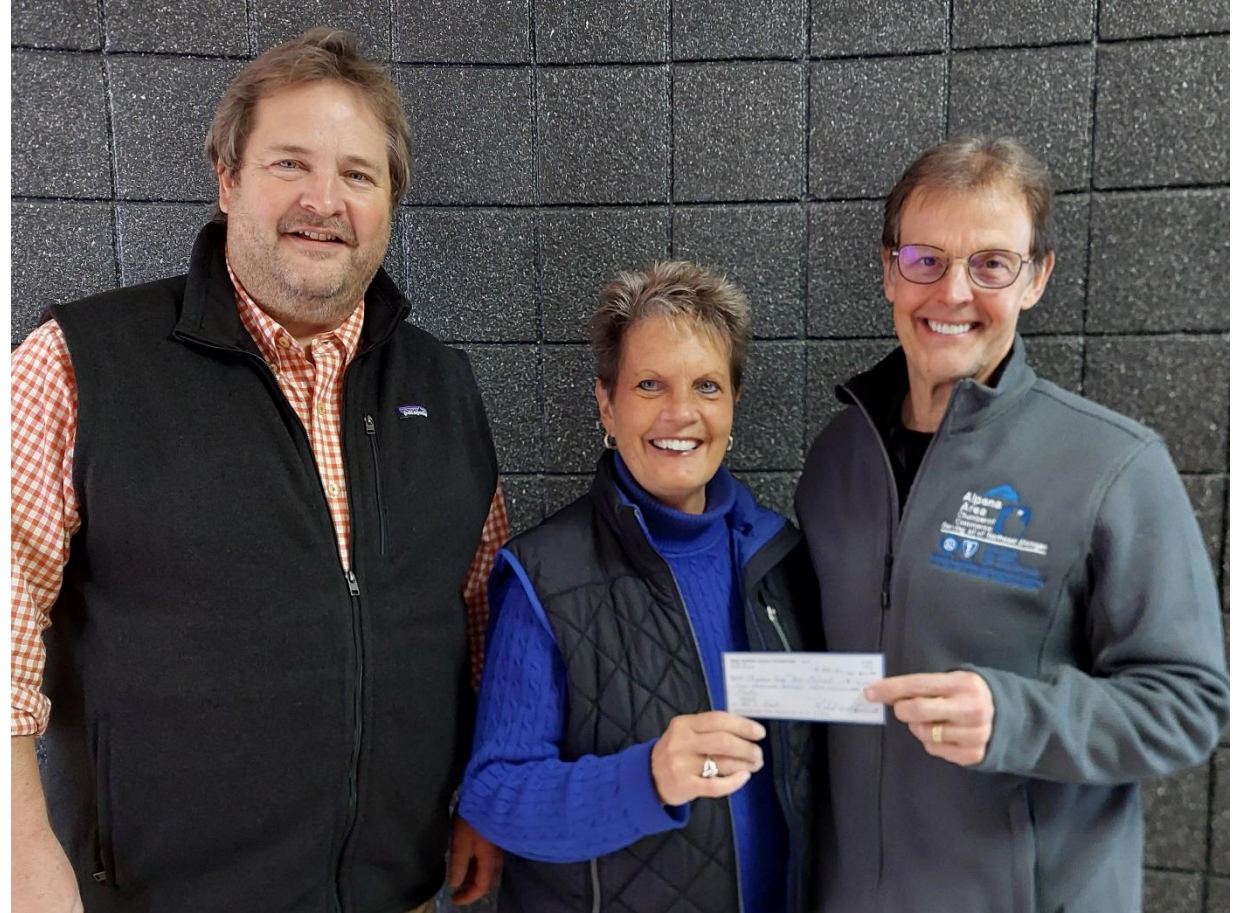
17. 2024 - Health & Wellness Sculpture

18. 2025 - Community Spirit Sculpture

19. 2026 - 250th Sestercentennial Celebration Sculpture

- The Bicentennial of Declaration of Independence - Sculptured Walkway & Bikeway

Bi-Path started with the “Bicentennial”



2022 Sculpture

50th Anniversary of TBA

Autumn Bildson Culligan Plaza



Water in Limestone is the cause, and it's the 50th Anniversary of Thunder Bay Arts. Support recreation with art in nature along the Alpena Bi-Path by helping us reach our goal of \$5,000 for the 50th! Art makes a difference. With your donation, your name will be inscribed on a commemorative plaque next to the sculpture along the Bi-Path. Consider a donation in someone's honor or as a memorial.

Carved of limestone, this depiction of water reflects the precious natural resources we all hold dear in Northern Michigan, from water to limestone to art. Check out the miniature moquette of the sculpture by sculptor Autumn Bildson in the TBA Gallery window. A large scale version of this will be located along the Alpena Bi-Path this coming fall 2022. Be a part of it. Donate to the project by joining the Giving Tuesday - Water in Limestone Sculpture project.





10:37

LTE

Instagram



Suggested Posts

Older Posts

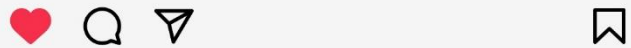
travel destinations



visit_alpena • Follow



Alpena, Michigan



Liked by millertyme62380 and 381 others

visit_alpena Only in Alpena will you get the chance to see a snowy owl riding a great blue heron! 😊

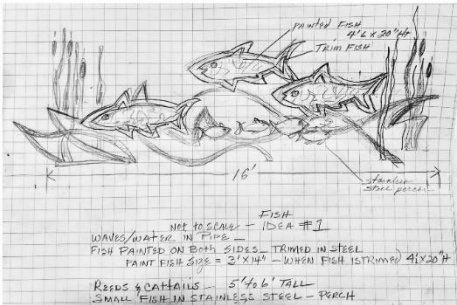


2023 Sculpture

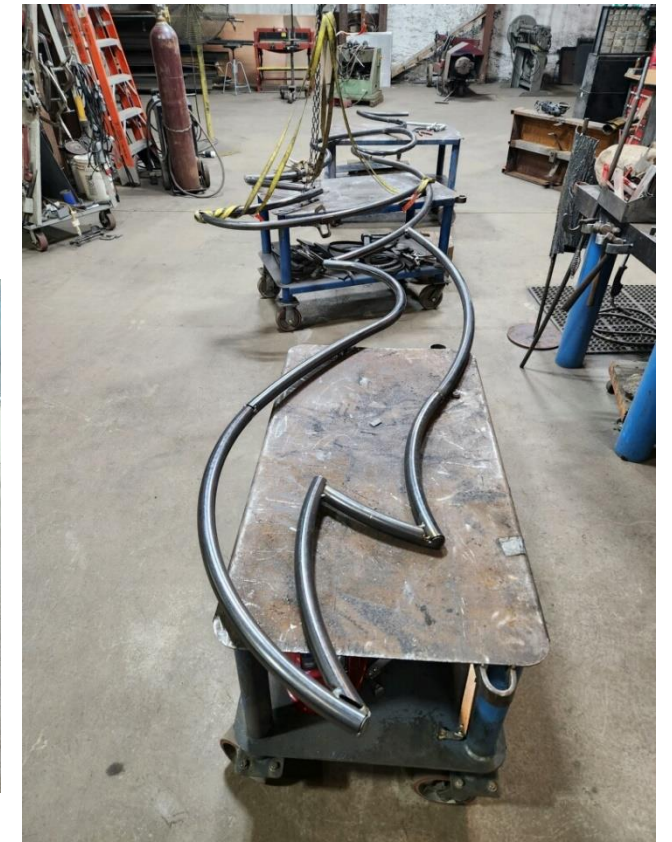
- Sytek Park
- Gone Fishing – Tribute to Brown Trout Festival – Family Fun Day
- Memorial to Randy Donakowski
- Mostly funded by memorials



"Fishing with "Grandpa"
Idea #1



Size: 16'Lx6'Hx5'D
Material: Aluminum
Painted Fish, Steel
and Stainless steel.



2024 Sculpture

- July 3, 2024 – Community Foundation for Northeast Michigan
 - 50th Anniversary
 - Collaboration of regional service clubs!

<https://bronzeman.com/>

<https://www.absolutearts.com/>

<https://largeart.com/>

North Central Michigan College – sculpture park artists



2025

Sculpture

2026 Sculpture

- Sestercentennial (250th)
 - Declaration of Independence
- 50th Anniversary
 - Alpena Bi-Path

Pledge of Allegiance



Artist: Glenda Goodacre

Medium: bronze, American flag

Location: 8th St. and Collge Ave., on the east side of JP's Coffeehouse.